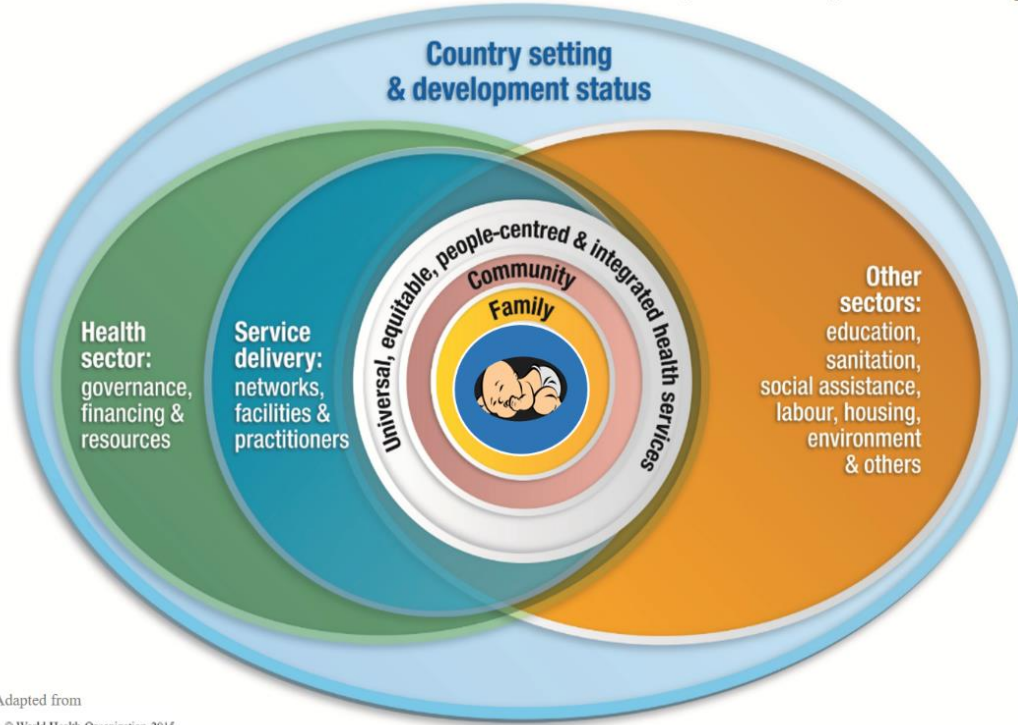


# Holistic Health Promotion of the Mind, Mouth, and Body



Adapted from  
© World Health Organization 2015

## Sharing and Exchanging Idea and Global Experiences on Community-engaged Approaches to Oral Health

A Virtual Workshop of the Global Forum on  
Innovation in Health Professional Education

Thursday, November 3, 2022

2:15 PM – 6:15 PM EDT

Online Webinar

## Table of Contents

---

- Workshop Statement of Task, 3
- Agenda, 4-6
- Resources, 7-8
- Planning Committee, Speakers, and Consultant Biographies, 9-24

## Webinar Notes

---

- Please type your questions into the Chat Box and indicate whom the question is directed to if needed.
- Please use the hashtag #IHPEGF to tweet about this event.
- Soon after the meeting, an archive of the video and presentations will be available on our webpage.
- A proceedings of the workshop will be published by the National Academies Press.
- If you are unable to connect or have a technical question, please email [HGoodtree@nas.edu](mailto:HGoodtree@nas.edu).

## Contact

---

If you have questions about the workshop on the Global Forum on Innovation in Health Professional Education, please email [IHPEGlobalForum@nas.edu](mailto:IHPEGlobalForum@nas.edu).

Please visit our webpage to learn more about the Global Forum on Innovation in Health Professional Education. If you are interested in becoming a member-sponsor of the Global Forum, please contact Forum Director Patricia Cuff at [PCuff@nas.edu](mailto:PCuff@nas.edu).

## Workshop Statement of Task

---

A planning committee of the National Academies of Sciences, Engineering, and Medicine will organize and conduct public workshops to share ideas and experiences on public health approaches to oral health for interprofessional and transdisciplinary learning that includes educators, health professionals, and community members. Invited presentations will provide a foundation for discussing newly published WHO and FDI World Dental Foundation definitions of community-engaged oral health and its application within, between, and across health professions.

The workshops will emphasize lifelong learning, the social determinants of health and community engagement, as participants explore the development of innovative approaches and models for oral health workforce education and training in a global context. Three thematic areas will frame the workshops discussions, including:

- Data and evidence;
- Policy and regulation; and
- Interprofessional and transdisciplinary education and learning.

Following each workshop, a proceedings of the presentations and discussions will be prepared by a designated rapporteur in accordance with institutional guidelines.

## Agenda

# Sharing and Exchanging Idea and Global Experiences on Community-engaged Approaches to Oral Health

November 3, 2022

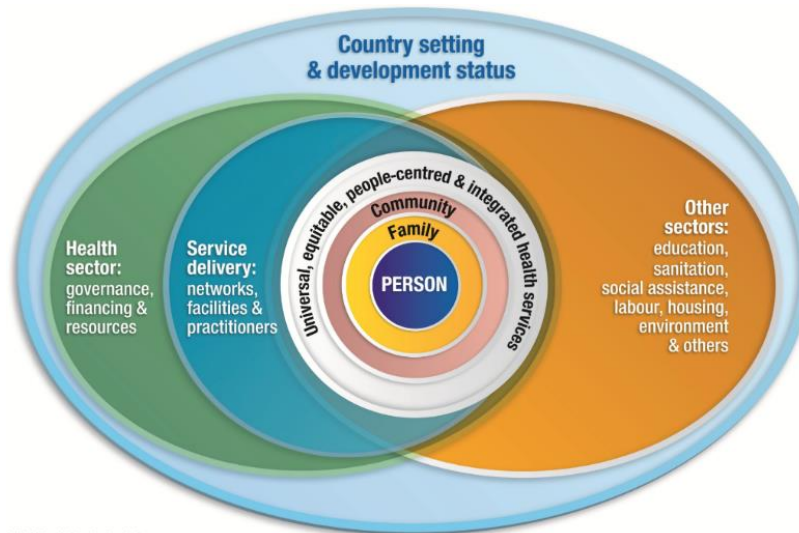
Session One: Learning from Interprofessional Oral Health Models of Education	
2:15pm	<p><b>Welcome from the Co-chairs</b></p> <ul style="list-style-type: none"> <li>• Isabel Garcia, College of Dentistry, University of Florida</li> <li>• Mayumi Willgerodt, Center for Health Sciences Interprofessional Education, University of Washington School of Nursing</li> </ul>
2:25pm	<p><b>Welcome from the Sponsor</b></p> <p>Kaz Rafia, Chief Health Equity Officer, CareQuest</p>
2:30pm	<p style="text-align: center;"><b>Interprofessional Health Professions Education in Oral Health</b></p> <p><b>Setting the Stage: Integrating Oral Health Into Overall Health</b>  <b>Moderator:</b> Lemmietta McNeilly, American Speech-Language-Hearing Association            Keith A. Mays, Dean, School of Dentistry, University of Minnesota</p>
2:50pm	<p style="text-align: center;"><b>Oral Health Roles of Different Health Professions</b></p> <p><b>Framing the Discussion/ Moderator:</b> Robert Weyant, University of Pittsburgh, School of Dentistry</p> <p><b>Roundtable Discussants:</b></p> <ul style="list-style-type: none"> <li>• Medicine: Hugh J Silk, University of Massachusetts, Chan Medical School</li> <li>• Nutrition/Dietetics: Jane Ziegler, Rutgers Biomedical and Health Sciences &amp; Lisa Mallonee, Texas A&amp;M School of Dentistry</li> <li>• Social Work: Dr. Rosemarie Hemmings, OHSU School of Dentistry</li> <li>• Speech-Language-Hearing: Lemmietta McNeilly, American Speech-Language-Hearing Association</li> </ul>

	<ul style="list-style-type: none"> <li>• Nursing: Judith Haber, College of Nursing, New York University</li> <li>• Psychology: Daniel W. McNeil, University of Florida</li> <li>• Public Health: Colleen Lampron, AFL Enterprises, LLC</li> </ul>
3:55pm	<b>BREAK</b>
<b>Session Two: Holistic Health Promotion of the Mind, Mouth, and Body</b>	
4:10pm	<p style="text-align: center;"><b>Envisioning a New Educational Model</b></p> <p><b>Oral Health Promotion (mind, mouth, body) Addressing Social Determinants</b>  <b>Moderator:</b> Anita Glicken, National Interprofessional Initiative on Oral Health</p> <p><b>A conversation with Dr. Brown:</b> Dr. Trina Brown, Founder/CEO NeuroPathic Trainers &amp; DataCivility, Sister and Caretaker</p> <p><b>A panel discussion on oral and holistic care in underserved communities</b>  <b>Panel Discussants:</b></p> <ul style="list-style-type: none"> <li>• Ashley N. Ford, Community Health Worker, CareSouth Carolina</li> <li>• Angel Martinez-Thornton, RN, Community Health Worker, Sac &amp; Fox Nation, Oklahoma</li> <li>• Md Koushik Ahmed, community based experiential SDH learning, Bangladesh</li> </ul>
5:00pm	<p><b>Operationalizing a New Model for Designing Demonstration Projects</b>  <b>Moderators:</b> Richard Berman, University of South Florida &amp; Julian Fisher, Charité University Berlin</p>
5:10pm	<p><b>Roundtable Discussants:</b></p> <ul style="list-style-type: none"> <li>• Michael Glick, Center for Integrative Global Oral Health, University of Pennsylvania</li> <li>• Teresa Marshall, University of Iowa College of Dentistry</li> <li>• Bruce Doll, Uniformed Services University of the Health Sciences</li> </ul>
5:20pm	<p><b>Expanding the conversation:</b> Workshop planning committee joins the discussion</p> <ul style="list-style-type: none"> <li>• Rita Villena, University of San Martín de Porres, Peru</li> <li>• Cleopatra Matanhire, Oral Health for Mental Health Patients Project, Zimbabwe</li> </ul>

<p>5:50pm</p> <p>6:00pm</p>	<ul style="list-style-type: none"> <li>• Lisa Mallonee, Texas A&amp;M School of Dentistry</li> <li>• Judith Albino, Colorado School of Public Health</li> <li>• Jeffery Stewart, American Dental Education Association</li> </ul> <p><b>Open Mic:</b> All participants are welcome to join the discussion.</p> <p>Next steps for demonstration projects</p>
<p>6:05pm</p>	<p><b>Closing by the Co-chairs</b></p>
<p>6:15pm</p>	<p><b>Adjourn</b></p>

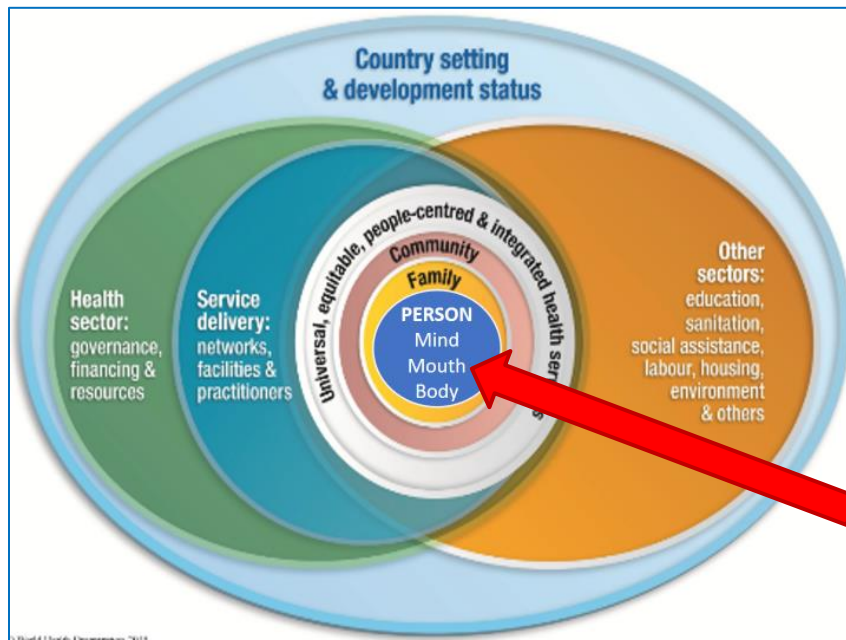
## Resources:

### WHO (2015) model of person-centered health services



© World Health Organization 2015

### Adapted WHO (2015) model of person-centered (mind, mouth, body) health services



© World Health Organization 2015

## Resources:

### ***FDI World Dental Federation's definition of oral health***

Oral health is multi-faceted and includes the ability to speak, smile, smell, taste, touch, chew, swallow and convey a range of emotions through facial expressions with confidence and without pain, discomfort and disease of the craniofacial complex (head, face, and oral cavity).

Oral health means the health of the mouth. No matter what your age, oral health is vital to general health and well-being.

- FDI World Dental Federation. *FDI's definition of oral health*.

### ***WHO Director-General's definition of oral health***

“Oral health is the state of the mouth, teeth and orofacial structures that enables individuals to perform essential functions, such as eating, breathing and speaking, and encompasses psychosocial dimensions, such as self-confidence, well-being and the ability to socialize and work without pain, discomfort and embarrassment. Oral health varies over the life course from early life to old age, is integral to general health and supports individuals in participating in society and achieving their potential.”

- World Health Organization. (2022, April 27). Oral health. Seventy-fifth World Health Assembly: Provisional Agenda item 14.1.

### ***NIH Report, Oral Health in America: Advances and Challenges***

Direct Link: <https://www.nidcr.nih.gov/sites/default/files/2021-12/Oral-Health-in-America-Advances-and-Challenges.pdf>

### ***New ASTDD Older Adult Oral Health Resources for Collaboration***

ASTDD is pleased to share [Older Adult Oral Health Resources for Collaboration](#)

### ***Designing Oral Health Curriculum That Facilitates Greater Integration of Oral Health Into Overall Health***, by Keith Mays, DDS, MS, PhD.

Direct Link: <https://www.frontiersin.org/articles/10.3389/fdmed.2021.680520/full>



## Planning Committee Biographies

### Co-Chairs



**Isabel Garcia, D.D.S., M.P.H. (Co-Chair)**, joined the University of Florida College of Dentistry as dean on Feb. 16, 2015, after retiring from the U.S. Public Health Service in 2014 as a rear admiral lower half. Garcia's career spans 37 years in public health, clinical practice, research, teaching and administration at the local, state and national levels. Garcia joined the National Institute of Dental and Craniofacial Research at the NIH in 1995 and held multiple leadership roles during her time there. She led NIDCR's science transfer efforts, directed the Institute's Office of Science Policy and Analysis, and served as acting NIDCR director from 2010-2011. Garcia also served as the institute's coordinator for global health and directed NIDCR's Residency in Dental Public Health program from 2005 to 2014. While with the USPHS, Garcia was deployed to help prepare a major health diplomacy mission to Central and South America, which provided care to over 85,000 people in 12 countries.

As deputy director of NIDCR from 2007-2014, she shared responsibility for the oversight and management of programs and functions within the institute – which included a staff of more than 400 scientists and administrators dedicated to research, training, science policy, health education, communications and financial management. Garcia received a doctorate in dental surgery in 1980 from Virginia Commonwealth University and a master's degree in public health from the University of Michigan in 1988. She subsequently completed a residency in dental public health at the University of Michigan and a fellowship in primary care policy from the U.S. Public Health Service. A fellow of the American College of Dentists and the Pierre Fauchard Academy, Dr. Garcia is a diplomat and Past President of the American Board of Dental Public Health and an active member of the American Dental Education Association, the International Association for Dental Research, and the American Dental Association.



**Mayumi Willgerodt PhD, MPH, FAAN, FNASN, RN (Co-Chair)**, is Associate Professor and Vice-Chair of Education, in the department of Child, Family, and Population Health Nursing at the University of Washington, and affiliate faculty in the Center for Health Sciences Interprofessional Education Research and Practice, and in the Center for Global Health Nursing. Dr Willgerodt's research is grounded in the community, centered around school health and interprofessional education and collaborative practice. She is active nationally and internationally consulting on community-based collaborative practice, team-based care, and interprofessional education.

She is the lead researcher for the National School Nurse Workforce Study and has a funded program of research focused on school nursing services. She was a Josiah M. Macy Jr Foundation Faculty

Scholar (2013-2015), during which time her work focused on the integration of oral health in all levels of nursing education and practice

Dr. Willgerodt is a Fellow in the American Academy of Nursing and a Fellow in the National Academy of School Nurses. Dr. Willgerodt earned her BSN from Georgetown University in 1987, MPH and MS in 1996, and PhD in 1998 from the University of Illinois at Chicago.

## Planning Committee Members



**Md Koushik Ahmed, MDS, MA**, is a current graduate student cum Teaching Assistant and Research Assistant at Falk College Department of Public Health, Syracuse University. Prior to this, he has worked for several years on community based experiential learning on social determinants of health in Bangladesh. At present he is actively involved in studying the competency-based teaching and learning on social determinants of health for the global health graduate students at Syracuse University. He has written several large grants funded by Johns Hopkins Center for Communication Program and World Health Organization TDR on implementation science. His area of interests

includes implementation science for social determinants of health and social network analysis for global health.



**Judith Albino, PhD**, is President Emerita of the University of Colorado and Professor Emerita in the Colorado School of Public Health. She received her PhD in 1973 from the University of Texas at Austin, with a focus on measurement and evaluation in psychology, education, and communications. She built an interdisciplinary research program in psychosocial aspects of oral health and taught behavioral sciences at the University at Buffalo School of Dental Medicine (1972-1990). She also served that university as Associate Provost and Dean of the Graduate School before being recruited to the University of Colorado, serving briefly as Vice-President for Academic Affairs

and then as President. After 17 years focused on university leadership in Colorado and California (Alliant International University), she returned to a faculty role at the CU Anschutz Medical Campus, where she directed an NIH-funded Center for Native Oral Health Research, conducting clinical trials of behavioral strategies for caries prevention in American Indian populations. In 2018, Dr. Albino was tapped by the National Institute of Dental and Craniofacial Research to serve as co-director and scientific editor of the recently released NIH landmark report on Oral Health in America: Advances and Challenges. She is a Fellow of the American Association for Dental and Craniofacial Research and of the American Psychological Association, a member of the honor societies of dentistry and public health, and an honorary member of the American College of Dentists, and in 2013, she was named Distinguished Psychologist in Management by the Society of Psychologists in

Leadership. Dr. Albino has served on the boards of numerous corporate and non-profit organizations, including chairing the Board of Caring for Colorado from 2018-2020.



**Richard Berman, MBA, MPH**, is the Associate Vice President for Strategic Initiatives for Innovation and Research at the University of South Florida, visiting social entrepreneurship professor in the Muma College of Business, and a professor in the institute for Advanced Discovery & Innovation. He is currently an elected member of the National Academy of Medicine of the National Academy of Sciences (Formerly known as the Institute of Medicine) in Washington, DC, and is a board member for Emblem Health. He is a member of the Seeds of Peace Board of Directors, a board member for the Savannah Centre for Diplomacy, Democracy and Development in Abuja, Nigeria and CATAYS, Inc. Additionally, he is the vice-chair of the board of directors for OIC in Florida. Previous organizations in which he has served on the board of directors include the Lillian Vernon Corporation, the Westchester Jewish Chronicle (Chairman of the Advisory Board), the American Jewish Committee (Westchester Chapter), and the March of Dimes. Previously, Richard has worked as a management consultant for McKinsey & Company, the Executive Vice President of NYU Medical Center and Professor of Health Care Management at the NYU School of Medicine. He served as the Special Advisor to the leader of the African Union-United Nations Peace Keeping Mission in Darfur. He has also held various roles at Korn Ferry International, Howe-Lewis International, served in 2 cabinet positions in New York State Government, and the US Department of Health Education and Welfare. In 1995, Mr. Berman was selected by Manhattanville College to serve as its tenth President. Mr. Berman is credited with the turnaround of the College, where he served until 2009. Mr. Berman received his BBA, MBA, and MPH from the University of Michigan and holds honorary doctorates from Manhattanville College and New York Medical College.



**Bruce Doll DDS, PHD, MBA**, is the Assistant Vice President for Technological Research and Innovation, Office of Research at USU in Bethesda, Maryland. He leads the development and integration of database management within the research portfolio and the advancement of novel technologies focused upon military medical requirements. His formal education includes a DDS from SUNY Buffalo, Periodontics specialty certificate from Navy Postgraduate Dental School, PhD from Penn State, and MBA from the Navy Postgraduate School. During 34 years of service with the US Navy, he served with both the Navy and US Marine Corps, INCONUS and OCONUS. Several times deployed, RADM Doll completed his service as both Director, Research, Development and Acquisition Directorate for the DHA in Falls Church, VA and the Deputy Commander, US Army Medical Research and Materiel Command, Fort Detrick, Maryland overseeing execution of Defense Health Program funded medical research. He has had academic appointments with Carnegie Mellon University, University of Pittsburgh, Oregon Health Sciences University, University of Maryland,

Pennsylvania State University and Rutgers University prior to coming to USU. He served as the COO for the Rutgers - Cleveland Clinic Consortium for the Armed Forces Institute of Regenerative Medicine. He has served on several scientific boards. He has published on the topics of bone regeneration and is a former grantee of the NIH and NIST.



**Julian Fisher, BDS, MSc, MIH** is a policy advisor and analyst specializing in health workforce education, social and environmental determinants of health, and global oral health. He is currently Coordinator and Senior Researcher for Planetary Health and Global Oral Health at the Department of Oral Diagnostics, Digital Health and Health Services Research at Charité University Berlin, Germany. He is responsible for the development and delivery of the Global Oral Health education module to over 25 dental schools and associations around the world.

Prior to this he was Associate Director Professional and Scientific Affairs with the World Dental Federation, Geneva, Switzerland. His work experience covers a diverse range of professional domains including international public health policy and advocacy (consultancies for WHO, UNESCO & UNEP), health profession (federation) management, health workforce undergraduate and post graduate education, both classroom and web based.

His work has been based in Europe, Tanzania, South Africa, Saudi Arabia, Falkland Islands and Antarctica within various sectors and organizations. Julian Fisher earned his BDS (Dentistry) from Birmingham University in 1985, his MSc (HIV/AIDS) from Stellenbosch University in 2002, and his MIH (International Health) from Charité University in 2006.



**Lisa F. Mallonee MPH, RDH, RD, LD** is a tenured Professor, Graduate Program Director and Registered Dietitian in the Caruth School of Dental Hygiene at Texas A&M School of Dentistry (TAMU SOD), where she has served as course director for public/community health and provides nutrition lectures in the dental hygiene and predoctoral dental curriculum. Additionally, she oversees practicum placement and thesis research as a co-director for postgraduate dental hygienists enrolled in the Master of Science in Education for Healthcare Professionals program housed in the Texas A&M College of Medicine. Furthermore, she serves as a preceptor for

the Baylor University Medical Center Dietetic internship program. She was most recently appointed to serve in the capacity of Interim Associate Dean of Academic Affairs at TAMU SOD.

She received her Bachelor of Science in Dental Hygiene (1990) and a Master of Public Health with a coordinated degree in nutrition (2000) from the University of North Carolina at Chapel Hill. As a health care professional and educator, she is committed to two interconnected goals: sharing her knowledge, expertise, and passion while promoting the value of interprofessional collaboration among dental professionals within the wider health care community for greater patient/client outcomes. Lisa serves as a reviewer and expert content advisor on numerous



publications that include: The Journal of the Academy of Nutrition and Dietetics, Journal of the American Dental Association, the Journal of Dental Hygiene and organizations such as the National Diabetes Education Program, National Maternal & Child Oral Health Resource Center and the American Dental Educators Association (ADEA). Lisa is a published author in dental textbooks and peer reviewed journals on multiple topics pertaining to diet, nutrition and oral health and the practical application to whole body health for dietetic and dental professionals. She coauthored the Nutrition Curriculum for the revised 2015 edition of the ADEA Curriculum Guidelines for Allied Dental Education Programs and served as primary author for the Academy of Nutrition and Dietetics Practice Paper on Oral Health and Nutrition. She is currently a coauthor on the editorial team continuing Dr. Esther Wilkins' cornerstone textbook Wilkins' Clinical Practice of the Dental Hygienist and primary author on The Dental Hygienist's Guide to Nutritional Care, 6e.



**Lemmieta McNeilly, Ph.D., CCC-SLP, CAE**, is an ASHA Fellow, a Distinguished Scholar and Fellow of the National Academy of Practice, and an American Society of Association Executives Fellow and Certified Association Executive. Presently she serves as ASHA's Chief Staff Officer for Speech-Language Pathology with responsibility for Speech-language pathology practices, governmental affairs and public policy, international programs and 20 special interest groups. Her resume includes numerous international publications and presentations for health care executives, health professionals and academics across the globe, as well as consultations with the World Health Organization, the Global Rehabilitation Alliance, and the National Academy of Sciences. She has addressed the following topics: empowering leaders for the changing health care landscape, genomics for health care professionals, interprofessional education and collaborative practice, social determinants of health, effective utilization of speech-language pathology assistants and educating clinicians to practice at the top of the license and target outcomes based on the functional needs of individuals and families.



**Jonathan Metzl, MD, PhD** is the Frederick B. Rentschler II Professor of Sociology and Psychiatry, and the director of the Department of Medicine, Health, and Society, at Vanderbilt University in Nashville, Tennessee. He received his MD from the University of Missouri, MA in humanities/poetics and psychiatric internship/residency from Stanford University, and PhD in American culture from University of Michigan. Winner of the 2020 Robert F. Kennedy Human Rights Book Award, the 2020 APA Benjamin Rush Award for Scholarship, and a 2008 Guggenheim fellowship, Dr. Metzl has written extensively for medical, psychiatric, and popular publications about some of

the most urgent hot-button issues facing America and the world. His books include *The Protest Psychosis*, *Prozac on the Couch*, *Against Health: How Health Became the New Morality*, and *Dying of Whiteness: How the Politics of Racial Resentment is Killing America's Heartland*.



**Jeffrey Stewart, D.D.S., M.S.** is Senior Vice President for Interprofessional and Global Collaboration at the American Dental Education Association. Prior to joining ADEA, he had been a faculty member at three dental schools. In his current role with ADEA, he is a member of the Interprofessional Education Collaborative Planning Committee and the Interprofessional Professionalism Collaborative. He attended college at the University of Delaware and received his dental degree from the University of North Carolina. Following a general practice residency, he attended the University of Michigan, earning a master's degree in oral pathology and diagnosis.

## Consultants

---



**Lois K. Cohen, PhD**, serves as a consultant & Paul G. Rogers Ambassador for Global Health Research since her retirement from U.S. government service in 2006. She is a sociologist whose research and health science administration career included service as the Director of Extramural Research, Associate Director for International Health and Director of the WHO Collaborating Center for Dental, Oral & Craniofacial Research and Training, National Institute of Dental & Craniofacial Research, National Institutes of Health, Bethesda, MD. Having authored more than 150 articles in peer-reviewed journals and edited four books on the social sciences and dentistry, she co-directed the WHO International Collaborative Studies of Oral Health Systems.

Having served on several journal boards among them the Journal of the American Dental Association, she co-chairs the Friends of the Organization for Safety, Asepsis and Prevention, and serves on the boards of the Alliance for Oral Health Across Borders, the Edw. B. Shils Entrepreneurial Fund, the Global Advisory Council of the Regulatory Affairs Professional Society, and the Caplin Family Charities. She provides consultation to the NIH, the World Health Organization and its regional offices in Africa and the Americas, the Canadian Institutes for Health Research, various universities and professional associations including the American Dental Association, the FDI World Dental Federation, the American Dental Education Association and others in the area of global health through oral health. Lectures and awards in her honor are presented annually at the University of the Sciences in Philadelphia, PA and Harvard University's School of Dental Medicine in Boston, MA and at the International Association of Dental Research's Behavioral, Epidemiological and Health Services Research Group.

---



**Anita Glicken, MSW**, is a Professor and Associate Dean Emerita at the University of Colorado Anschutz Medical Center, and has over 30 years of administrative, research and education experience. She was a founding member of the National Interprofessional Initiative on Oral Health (NIIOH) and is now serving as Executive Director. The NIIOH provides backbone support, and is the national voice, for interprofessional integration of oral health into primary care. In 2009, Ms. Glicken launched the PA Leadership Initiative on Oral Health, creating a model systems change strategy that engages national organization leaders to work together to integrate oral health across professional education and practice. Ms. Glicken has served on several national expert panels to develop tools and resources supporting workforce research, education and policy, including HRSA’s 2014 Interprofessional Oral Health Core Competencies for Primary Care Providers and the 2015 Qualis Health White Paper, Oral Health: An Essential Component of Primary Care.

Past leadership roles include President of the Physician Assistant Education Association (PAEA) and President/CEO of the National Commission on Certification of Physician Assistants Health Foundation, where she worked with HRSA’s National Center for Health Workforce Analysis (NCHWA) to create a database on certified PA practice to inform health policy and workforce planning. A clinical social worker, Ms. Glicken’s career has focused on healthcare transformation, partnering with others to create innovative education and care delivery models grounded in interprofessional collaboration and health equity. Most recently she was founding Project Director of an American International Health Alliance contract to build midlevel health workforce capacity in South Africa. Since 2012, she has been an invited member of the U.S. delegation of the International Health Workforce Collaborative. Ms. Glicken is the author of over 100 publications in health care education, workforce and research.



**Teresa A. Marshall, PhD**, is a registered, licensed dietitian with a doctorate in human nutrition who coordinates and teaches the nutrition curriculum, directs the dental student research program, and holds the Michael W. Finkelstein Centennial Teaching Professorship at the University of Iowa’s College of Dentistry. Dr. Marshall’s primary research interests focus on the relationships among diet, nutrition, oral health, and systemic health. Dr. Marshall has engaged with national and international groups to understand, educate, and advocate for caries prevention with emphasis on diet. She served as a delegate to the Academy of Nutrition and Dietetics’ Dietary Guidelines Collaborative identifying diet-related caries science to inform the United States Department of Agriculture’s 2020 Dietary Guidelines; was

a section author including content on diet in caries prevention for the 2020 Surgeon General’s Report on Oral Health; and provided a dietary voice for the Borrow Foundation’s Oral Health-Related Birth Cohort Study. She is a member of the Academy of Nutrition and Dietetics (including the practice group Nutrition Educators of Health Professionals), the American Dental Association

(ADA), the International Association for Dental Research, the American Dental Education Association (ADEA), and the American Academy of Cariology (AAC). She is a research editor for the Journal of the Academy of Nutrition and Dietetics and a reviewer for multiple nutrition and dental journals.



**Jane Ziegler DCN, RDN, LDN**, is currently the Interim Chair and Director of the Doctor of Clinical Nutrition Program in the Department of Clinical and Preventive Nutrition Sciences. She is adjunct Associate Professor in the Rutgers School of Dental Medicine. Dr. Ziegler has over 30 years of clinical practice in the areas of neonatal, pediatric and adolescent nutrition with emphasis on chronic disease, primarily in the areas pediatric pulmonary, gastrointestinal disease and pediatric weight management.

She has served as a member of the Pediatric Weight Management Expert Workgroup of the Academy of Nutrition and Dietetics, Evidence Analysis Library (EAL) and served as a lead analyst as well as a research analyst for the EAL. In the Rutgers School of Dental Medicine, she has provided clinical support to the specialty clinics of the Orofacial Pain Clinic, Oral Medicine Clinic, Pediatric Clinic and the Special Needs Clinic as well as clinical support in the undergraduate dental clinics. She has supported multiple courses within the School of Dental Medicine including lectures in Clinical Nutrition, Dental Caries/Microbiology, and Special Needs Dentistry.

She is a course director for pediatric nutrition, weight management, metabolism and body composition, nutrition and pharmacology and other graduate level nutrition courses. She is a mentor for the New Jersey Leadership Education for Neurodevelopmental and Related Disabilities (LEND) program. She mentors masters and doctoral student research projects and has been a principal investigator on multiple for pediatric oral health grants and educational grants. She is an ad hoc reviewer for multiple peer-reviewed journals. Dr. Ziegler brings strong clinical and educational experiences, skills and expertise to the clinic population, nutrition courses and research studies.



**Deborah Weisfuse, MS, DMD**, is the current President of the Alliance for Oral Health Across Borders. She is Advisory Director on the New York County Dental Society Board since she has been a New York State Dental Association officer in 2012. She has served as National Secretary of the American Friends of the Dental Volunteers for Israel, and now serves as Director at Large on their Board. She sits on the Advisory Board of Project Accessible Oral Health.

She was elected as the first woman president of the New York State Dental Association in 2012. During her years as a state officer, she initiated the



first Student Legislative Day and founded the New York State Dental Association Technology Task Force. Both programs have become permanent in the structure of the organization. She has served on the American Dental Association Committee on Annual Meetings and as a Trustee for the New York State Dental Foundation for 12 years. Dr. Weisfuse has also had the honor of serving on the Commission of Dental Accreditation (CODA) Predoctoral Review Committee, and has consulted for the Commission both nationally and internationally in different roles. Recently she was elected by the American Dental Association to serve as a CODA Commissioner and has just started her term of office. Dr. Weisfuse received her Master's degree in biomedical research at the State University of New York at Downstate Medical Center. Then she pursued her dental degree at the University of Pennsylvania School of Dental Medicine. Her residencies included a General, Geriatric Residency, and a Chief Residency at the Long Island Jewish/ Hillside Medical Center, now known as Northwell. After this, she taught clinically at Columbia University School of Dental Medicine and then at the Community Dentistry Department at Fairleigh Dickinson University School of Dentistry where she also wrote NIH grants to improve the quality of oral health for inner city children.

Earlier in her career, Dr. Weisfuse created a nursing home curriculum and rotation for the dental residents at Cobble Hill Nursing Home, associated with Long Island College Hospital in Brooklyn and was an attending there part time for 7 years. She built a successful private general practice in Midtown Manhattan while always continuing to participate in many ways within the dental profession and its organizations. At this time, she is currently retired from clinical practice. Dr. Weisfuse has been awarded honorary fellowships for her studies and achievements by the American College of Dentists, the International College of Dentists, the Pierre Fauchard Academy, the Academy of General Dentistry, the New York Academy of Dentistry, and the International Academy of Dental-Facial Esthetics.

In 2019, Dr. Weisfuse received the National Jeffrey Dalin Distinguished Volunteer Service Award from the American Dental Association for her work as General Chair in development of the largest Give Kids a Smile programs in the United States in New York City.

## Speakers



**Trina Brown, PhD, CNPT** is the Founder/CEO of Data Civility LLC (African American biomedical company) and Neuro Pathic Trainers Foundation, Inc. (Mental and Physical healthy lifestyle) a division of Dr. Trina Brown & Associates. Dr. Brown company Data Civility collaborates with University of North Carolina Chapel Hill, Duke University, Wake Forest University Maya Angelou Center for Health Equity (MACHE) and several Historically Black Colleges and Universities HBCU. Dr. Brown has been serving on numerous committees with various organizations to improve healthcare around the world.

Dr. Brown have recently received the President's Lifetime Achievement Award for her lifelong commitment in building a stronger nation through volunteer service.

Dr. Brown have served as an Advocate for Healthcare & Humanity for over 30 years, International Motivational Speaker, and Radio Host in over 180 countries, Mental and Health Lifestyle Coach and Counselor, Mental Fitness Trainer.

Dr. Brown mission is to educate and empower people about healthcare issues with dementia, aging population and financial impact on the families and communities. “Power and Greatness within the M.I.N.D. - Mental Improvement Negates Deterioration.”



**Ashley Ford, CCHW, BSBA**, is the Healthy Kids Project Director with CareSouth Carolina in Hartsville, South Carolina. Ms. Ford has worked in health care since 2008. She has worked with CareSouth Carolina for nine years. She has held numerous positions within the organization. In 2017, Ms. Ford attended Northeastern Technical College to complete the Community Health Worker program. She became a Certified Community Health Worker in May 2017. Ms. Ford is also a South Carolina Community Health Worker Association member. She served as an Ambassador for the Association from 2019-2020. In 2018, Ms. Ford joined the CareSouth Carolina Division of Dentistry as a Community Health Worker where she mostly worked with school-based pediatric patients. Her job as Dental CHW was to make contact with families to educate and help eliminate as many barriers that would prevent healthy dental health. After two of years working in Dental Health. Ms. Ford accepted a position as Medical Case Manager for Infectious Diseases. She worked with patients who had been diagnosed with HIV/AIDS. Even when while working in Infectious Disease, Ms. Ford continued to educate patients on the importance of Dental Health.



**Michael Glick DMD**, is Executive Director of the Center for Integrative Global Oral Health and Professor of Clinical Restorative Dentistry at Penn Dental Medicine.

From 2009-2015, Dr. Glick served as Dean of the University at Buffalo, SUNY, School of Dental Medicine where he remained as Professor of Oral Diagnostic Sciences before coming to Penn De[Type here]ntal Medicine in 2021. Prior to his time at Buffalo, he was Professor of Oral Medicine at Arizona School of Dentistry & Oral Health, A.T. Still University, also holding the post of Associate Dean of Oral-Medical Sciences at the University’s School of Osteopathic Medicine. While at the University of Medicine and Dentistry of New Jersey from 2001 to 2007, Dr. Glick served as Chairman of the Department of Diagnostic Sciences and as Director of both the Division of Oral Medicine and the Postgraduate Training Program in Oral Medicine.

This position with Penn Dental Medicine is Dr. Glick’s second faculty appointment at the School, previously serving from 1994 to 2001 on the Oral Medicine faculty. During that time, he also directed the School’s programs for medically complex patients and infectious diseases.

A widely published and highly respected lecturer, Dr. Glick served as Editor-in-Chief of The Journal of the American Dental Association from 2005 to 2020. In the global arena, Dr. Glick has been active with the FDI World Dental Federation since 2007, serving on multiple committees, including co-chairing the Task Team Vision 2030. He also had a leading role in establishing FDI's Vision 2020 and most recently was the primary author of its Vision 2030, giving guidance for a global interdisciplinary and integrative role for oral health.



**Judith Haber, PhD, APRN, FAAN**, is Professor Emerita at the NYU Rory Meyers College of Nursing (NYU Meyers). Dr. Haber is the Executive Director of a national nursing oral health initiative, the **Oral Health Nursing Education Practice (OHNEP)** Program, funded by the CareQuest Institute for Oral Health Advancement. She is an NYU leader of interprofessional education and practice, with a special focus on oral-systemic health, collaborating with interprofessional partners at NYU College of Dentistry and School of Medicine. Dr. Haber is the lead author of the landmark (2015) AJPH publication, ***Putting the Mouth Back in the Head: HEENT to HEENOT***.

Dr. Haber was a member of: the HRSA Expert Panel that developed the 2014 Interprofessional Oral Health Core Competencies for Primary Care Providers, the Technical Expert Panel that developed the 2015 Qualis Health White Paper, ***Oral Health: An Essential Component of Primary Care*** and the 2017 Primary Care Collaborative (PCC) National Steering Committee on Shared Principles.

Dr. Haber is a Member of the Santa Fe Group, Fellow in the American Academy of Nursing and the New York Academy of Medicine. She is the 2011 recipient of the NYU Distinguished Teaching Award, 2014 NYU Meritorious Service Award, the 2020 Changemaker Award, and the 2015 Sigma Theta Tau International Marie Hippensteel Lingeman Award for Excellence in Nursing Practice, the 2017 DentaQuest Health Equity Hero Award. In 2019, the OHNEP Program received an EdgeRunner Award from the American Academy of Nursing.



**Rosemarie Hemmings, LCSW, PhD**, is an assistant professor in community dentistry and director of social work at OHSU School of Dentistry. She is developing and teaching an innovative inter-professional curriculum related to social determinants of health within the school of dentistry. Additionally, Dr. Hemmings directs the social work program, which includes masters of social work interns from Portland State University, Arizona State University and Simmons University who provide social work interventions to patients within the dental clinic, and residency program.

As a social worker for some 30 years, she has seen the psychological impact of socioeconomic status on who gets their oral health needs met. Additionally, as a public health practitioner, she knows the impact of access issues related to oral health insurance, oral health

practitioners and affordable oral health care on marginalized populations. Dr. Hemmings states that one of the greatest rewards of being at a school of dentistry is being able to help educate dental students about the human factor (psychological and social) related to the oral health of their patients both now and in their future practice.

---



**Colleen Lampron, MPH**, is a public health leader with particular expertise in planning innovative initiatives that promote access to care for underserved populations. Proficiencies include managing innovative public health initiatives and overseeing local and national programs using a collaborative approach that advances innovations (e.g., IHI's Breakthrough Series model), and supports systematic and continuous quality improvement measures.

Through her company, AFL Enterprises, LLC Lampron partners with other experts to effectively execute client deliverables. Additionally, Lampron is a sought-after facilitator and quality improvement coach.

---



**Daniel W. McNeil, PhD**, is a professor and chair of UF Department of Community Dentistry and Behavioral Science; he has also been appointed the Parker E. Mahan Endowed Professor.

As a Clinical Psychologist, Dr. McNeil has worked in the realm of oral health for his entire career. His department houses two AEGD residency training programs, two research centers (focusing on pain and oral health disparities), and a variety of community outreach programs. He is actively engaged in community-engaged research on behavioral dentistry, pain, oral health inequities, and utilization of oral healthcare.

A member of the American Dental Education Association, the American Psychological Association, the International Association for Dental Research, and a Fellow of the American Association of Dental, Oral and Craniofacial Research, McNeil has an impressively long list of published research in books, articles and manuals. A former Fulbright fellow, he received the Distinguished Scientist Award in 2021 for Behavioral, Epidemiologic and Health Services Research from the International Association for Dental Research.

---





**Angel Martinez-Thornton, RN** is a Registered Nurse and Lifestyle Coach for the Sac and Fox Nation tribe in Stroud, Oklahoma. She works as the Community Health Manager for Black Hawk Health Center. She started her medical journey as a license practical nurse at the Chickasaw Nation in 2007. She was recognized as the 2010 employee of the year in the Specialty Clinic for her efforts to provide information and resources to cancer patients. She began her career as a Community Health Representative in 2013 at Black Hawk Health Center. During this time, she has continued her education by obtaining her Podiatric Medical Assistant (PMA) and studied new wound care strategies and techniques. She served on the board of Oklahoma Area Association of Community Health Representatives as Historian. In this role she planned and organized conferences to assist other CHR Programs.

In 2017, Angel earned her Nursing degree from Rose State College in Midwest City, Oklahoma. For the last 9 years, she provided health care, health promotion, and disease prevention services through the Community Health Program at Black Hawk Health Center.

Angel knows that the distance between dreams and reality is called action. This viewpoint continues to motivate her to teach, improve, and preserve the healthcare needs of the community.



**Cleopatra Matanhire-Zihanzu BDS, MBA, MSc**, is the project leader for the Oral Health for Mental Health Patients Project Zimbabwe, and a Faculty Member at the Department of Oral Health, Faculty of Medicine and Health Sciences, University of Zimbabwe.

She is an oral health advocate with an emphasis on Research, Education and Policy Formulation. She served in the Ministry of Health and Child Care, Oral health services Department, Zimbabwe, gaining exposure in primary, secondary and tertiary oral healthcare service delivery; coordinating National Dental Surgery Assistants Training, dental missions, culminating with her being Practitioner in Charge at the School of Dental Therapy and Technology.

Cleopatra holds a Bachelor of Dental Surgery from the University of Zimbabwe; a Master's in Business Administration from the National University of Science and Technology; and a Master of Science in Global Health from the University of Glasgow. She is also a 2017 Mandela Washington Fellow, who was in the Civic Leadership Track at Kansas State University (USA).



**Keith Mays, DDS, MS, PhD** is the Dean and Associate Professor at the University Of Minnesota School Of Dentistry. Dr. Mays’s academic career has included student advising, faculty private practice and service as the assistant director of the University of Maryland General Practice Residency Program. He served as the Division Director of Prosthodontics at East Carolina University School of Dental Medicine and as Associate Dean for Academic Affairs at the University of Minnesota, School of Dentistry.

Dr. Mays brings a pragmatic approach to management, a keen sensitivity to the needs of individuals and an appreciation for the dynamic relationship between patient care and student education. Dr. Mays’s several research interests have included clinical and educational research. Clinical research interests focus on improving oral motor function, specifically investigating compensatory movements of the tongue and jaw during speech, swallowing and mastication. Educational research interests focus on community-based dental education, student well-being, improving the academic environment, the use of CAD/CAM as an assessment tool in pre-clinical dental education and enhancing service-learning during community based dental experiences for students. His advocacy for better oral health as a pathway to improving overall health has shaped his research interest in the role of oral health in interprofessional education and collaborative practice.

---



**Kaz Rafia, DDS, MBA, MPH**, has over two decades of experience in successful startups, academia, managed care, government, and nonprofit organizations. In his role, Rafia leads the development and execution of strategic initiatives that foster and advance engagement and access to integrated oral healthcare for ethnically and socially diverse communities served by the CareQuest Institute. Rafia also drives the organization’s efforts to elevate the integration of oral health and overall health care through the oversight of the health improvement and grantmaking teams. Prior to joining CareQuest Institute, he served as the State Dental Director

for the Oregon Health Authority, where he set the equity centered State Oral Health Strategic Plan focusing on population health measures, health care workforce development, optimization of the value-based care coordination model, and telehealth. Rafia also served as a Dental Volunteer for 8 years at Medical Terms International leading successful mission-critical projects. Rafia holds a BS in Biology from Youngstown State University. He received his MBA from University of Illinois and Master of Public Health from Johns Hopkins University. He earned his Doctor of Dental Surgery from Ohio State University.

---



**Hugh J. Silk, MD**, is a Professor in the Department of Family Medicine and Community Health at the University of Massachusetts Chan Medical School. Hugh Silk received his undergraduate degree (BA) from Harvard University, where he majored in Government. He completed medical school at McMaster Medical School in Hamilton, Ontario, Canada.

He undertook his residency at the University of Massachusetts Medical School Family Medicine Residency Program in Worcester and successfully completed a Master of Public Health degree from the Harvard School of Public Health in Boston. Prior to medical school, Hugh taught with Dr. Robert Coles at Harvard University (The Literature of Social Reflection) and ran a youth service program in Toronto called Serve Canada.

Currently, Hugh provides clinical care at the Homeless Outreach and Advocacy Program (HOAP) and The Road to Care van. He is a Professor in the Department of Family Medicine and Community Health. He also teaches at the Harvard School of Dental Medicine. Hugh does public health work in oral health access and training health care providers to address oral health as part of overall health. He is a past recipient of the American Association of Public Health Dentistry Public Service Award. He is a Principal Investigator at the Center for Integration of Primary Care and Oral Health (CIPCOH) doing research and projects to improve oral health in medical and dental schools and primary care residency programs across the country. His other interest in medical education is medical humanities and reflective writing.



**Rita Villena, DDS, PhD**, is a researcher with a Master's and PhD in Pediatric Dentistry from the University of Sao Paulo, Brazil, graduated from UPCH. Currently Coordinator of Pediatric Dentistry at the San Martin de Porres University. She is an expert in prevention, use of fluorides and caries in early childhood. She was past President of the Latin American Region of Dental Research. International speaker and author of national and international publications in the area. Technical Consultant of the Ministry of Health and convened in 2014 as an evaluator of the national Oral Health programs. Committee Annual Scientific Program - International Association for Dental Research (IADR). Training on multicenter study with ICDAS - Saycare University

of Campinas, Brazil.



**Robert J. Weyant, MS, DMD, DrPH**, serves as Associate Dean of Dental Public Health and Community Outreach, and professor and chair of the Department of Dental Public Health at the School of Dental Medicine, as well as Interim Associate Dean for Faculty Affairs. He is also an associate professor of epidemiology at the Graduate School of Public Health. He received a master's degree in public health in 1978 and a dental degree in 1982 from the University of Pittsburgh School of Dental Medicine. In 1991 he earned a doctoral degree in epidemiology from the

University of Michigan. Dr. Weyant is a former Navy Dental Officer and V.A. dentist. He has been a diplomate of the American Board of Dental Public Health since 1987, and also is a past president of the American Association for Public Health Dentistry. He currently serves on numerous local, state and national committees aimed at reducing oral health disparities, increasing the dental workforce and improving access to oral care. Dr. Weyant's research involves basic and social epidemiological research related to oral health disparities. Presently he is PI or co-PI on several NIH-funded studies of oral disease etiology. Dr. Weyant also directs the Center for Oral Health Research in Appalachia (COHRA), and oversees the joint degree program in public health.

Dr. Weyant was recently acknowledged as the inaugural recipient of the American Association for Dental Research/American Dental Association (AADR/ADA) Evidence-Based Dentistry Faculty Award. He is recognized with this award for his life-long contributions to evidence-based dentistry.