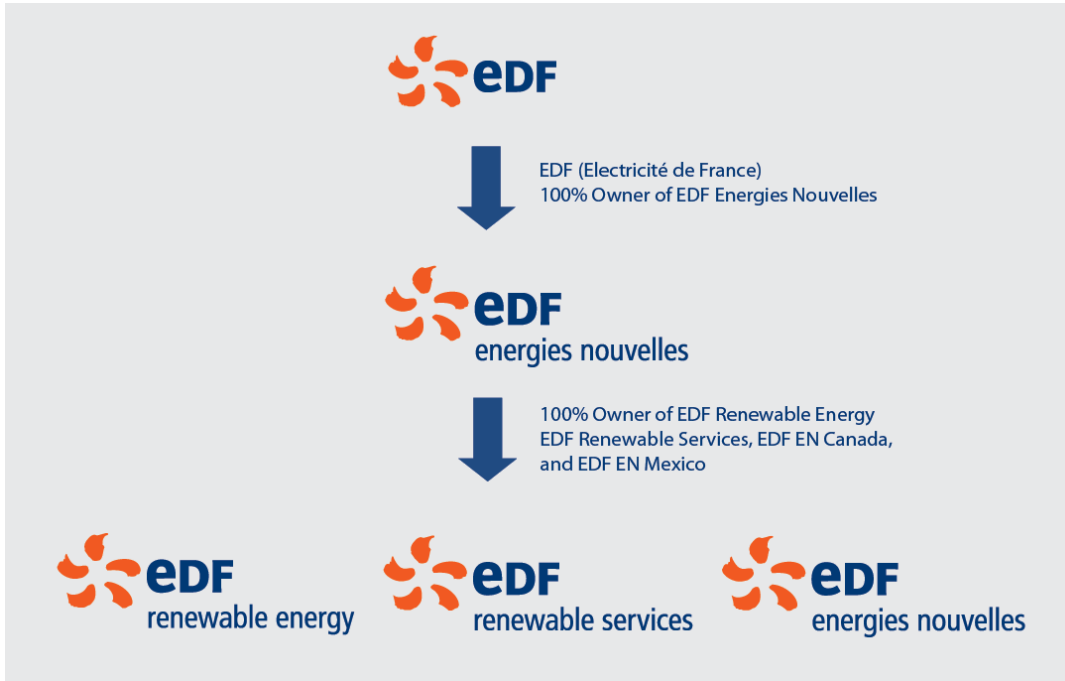




EDF RENEWABLE ENERGY OFFSHORE WIND EXPERIENCE

15th Biennial Harbor Safety Committee and Area Maritime Security Committee Conference: Partnering for Safe, Secure and Resilient Port Operations

CORPORATE STRUCTURE



EDF

...the leading electricity company in the world

EDF Energies Nouvelles (EDF EN)

...the global renewable arm of the EDF group

EDF Renewable Energy

...the US Subsidiary of EDF EN
and headquarters of EDF EN activities in North
America

EDF Renewable Services

...the O&M branch for North America

EDF EN Canada

...the Canadian Subsidiary of EDF EN

EDF EN Mexico

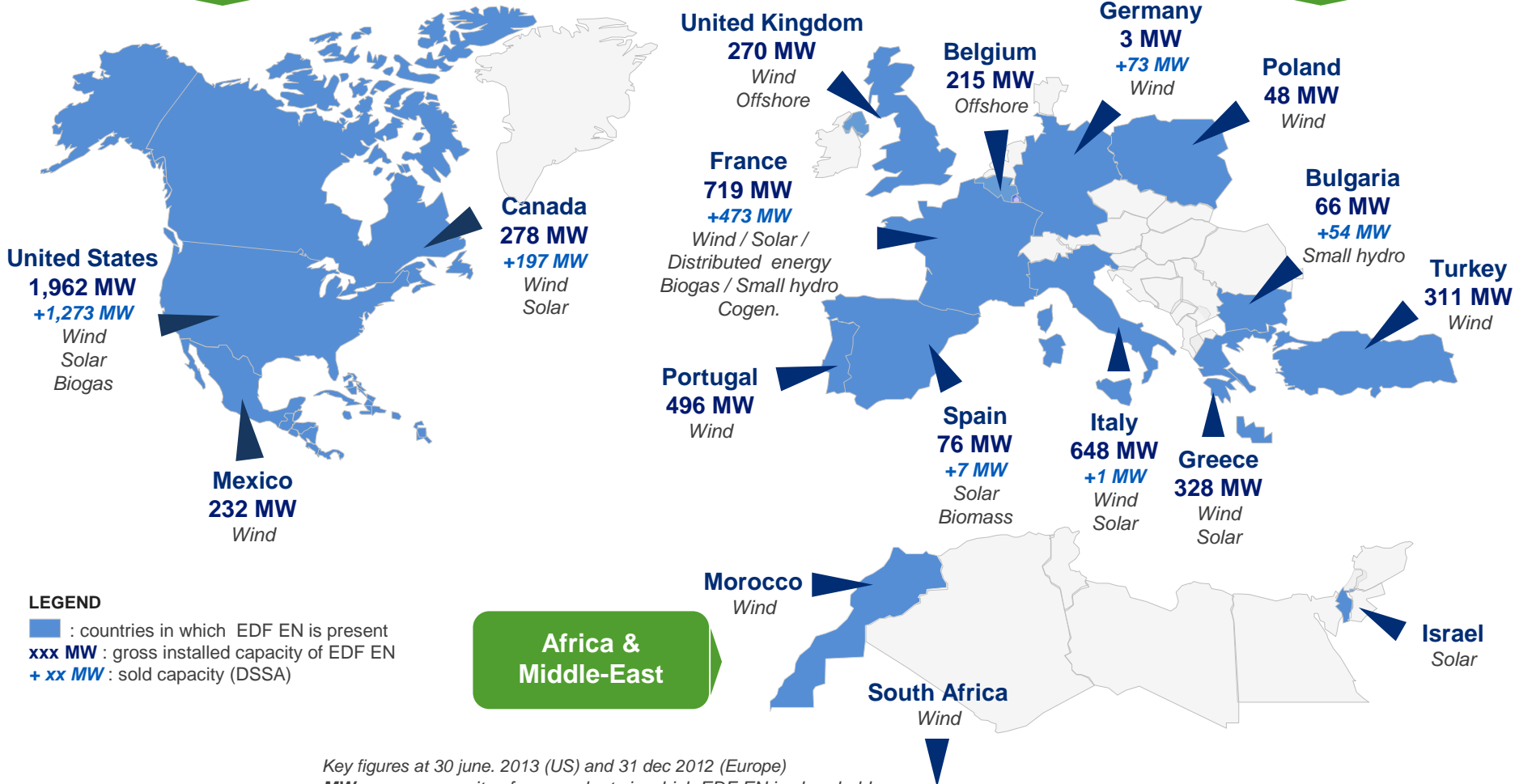
...the Mexican Subsidiary of EDF EN

EDF EN INTERNATIONAL FOOTPRINT

17 COUNTRIES – 6,358 MW GROSS INSTALLED

North America
2,472 MW

Europe
3,886 MW



LEGEND
■ : countries in which EDF EN is present
xxx MW : gross installed capacity of EDF EN
+ xx MW : sold capacity (DSSA)

Key figures at 30 June 2013 (US) and 31 Dec 2012 (Europe)
MW gross : capacity of power plants in which EDF EN is shareholder

CAN OFFSHORE WIND AND SHIPPING COEXIST?





ITEMS WE CAN LIKELY AGREE ON

- ❖ Safety of all at sea is paramount
- ❖ Shipping is a key component of our economy
- ❖ The shortest, safest shipping route is preferred over the alternatives
- ❖ Offshore wind turbines do not move (except the blades)
- ❖ Offshore wind is a new industry in the US and has many stakeholders
- ❖ Offshore wind can provide significant amounts of renewable energy directly to the east coast
- ❖ Offshore wind has the potential to provide thousands of new jobs along the eastern seaboard.
- ❖ All maritime industries have a stake in offshore wind
- ❖ It would be bad if a shipping vessel hit an offshore wind turbine

APPROVED VESSEL-TURBINE CONTACT



C POWER CONSTRUCTION

PHASES 1,2 AND 3



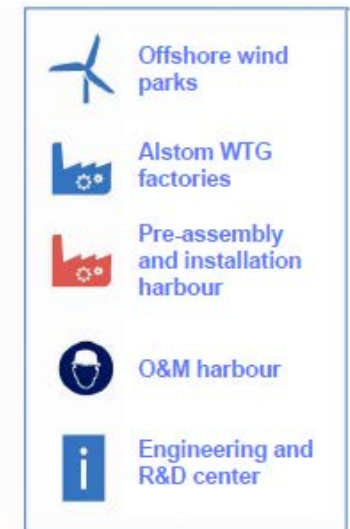
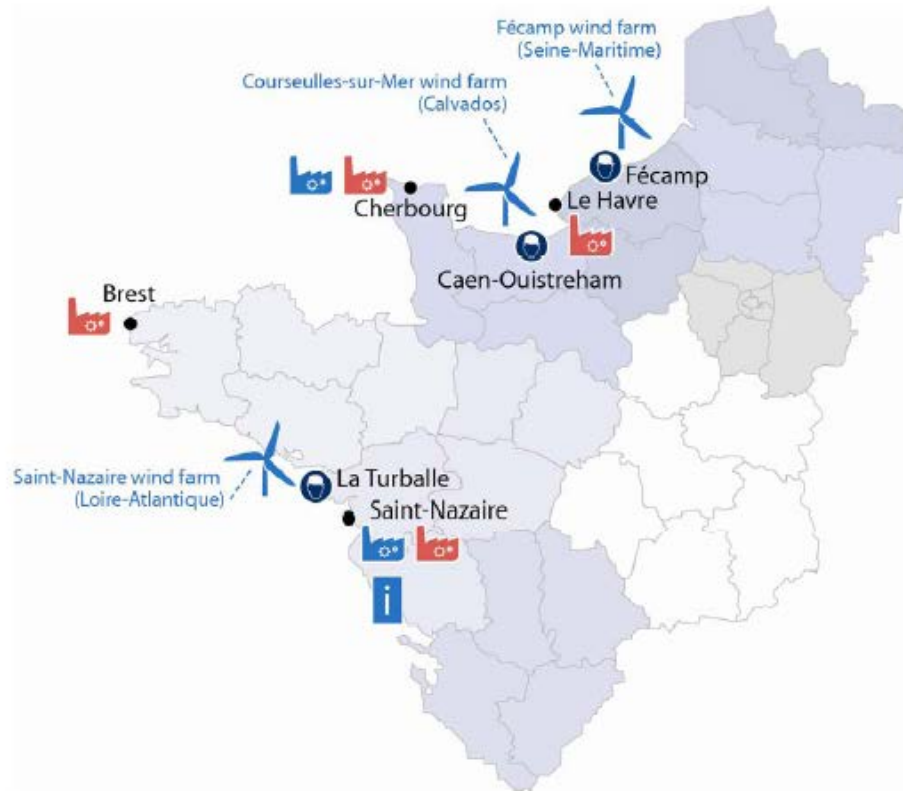
THE FRENCH COMPETITION – POSITIVE IMPACT OF A LARGE SCALE MARKET

This map highlights the onshore investment as a result of EDF EN's recent award of 1.5 GW of offshore wind projects.

Many local firms are involved in advancing the industry.



INDUSTRIAL PLAN OVERVIEW

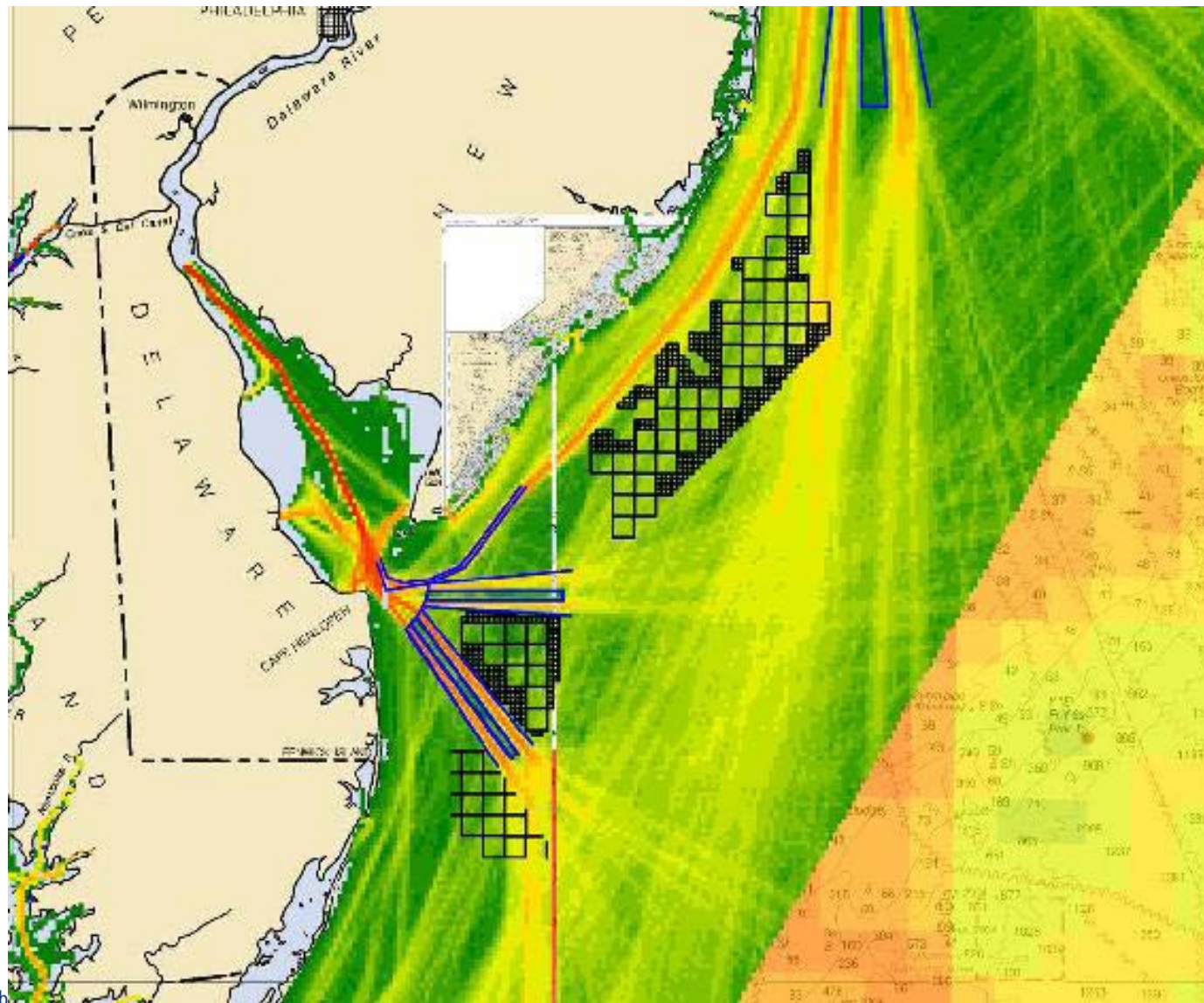


TEESIDE PROJECT – HARTLEPOOL, ENGLAND

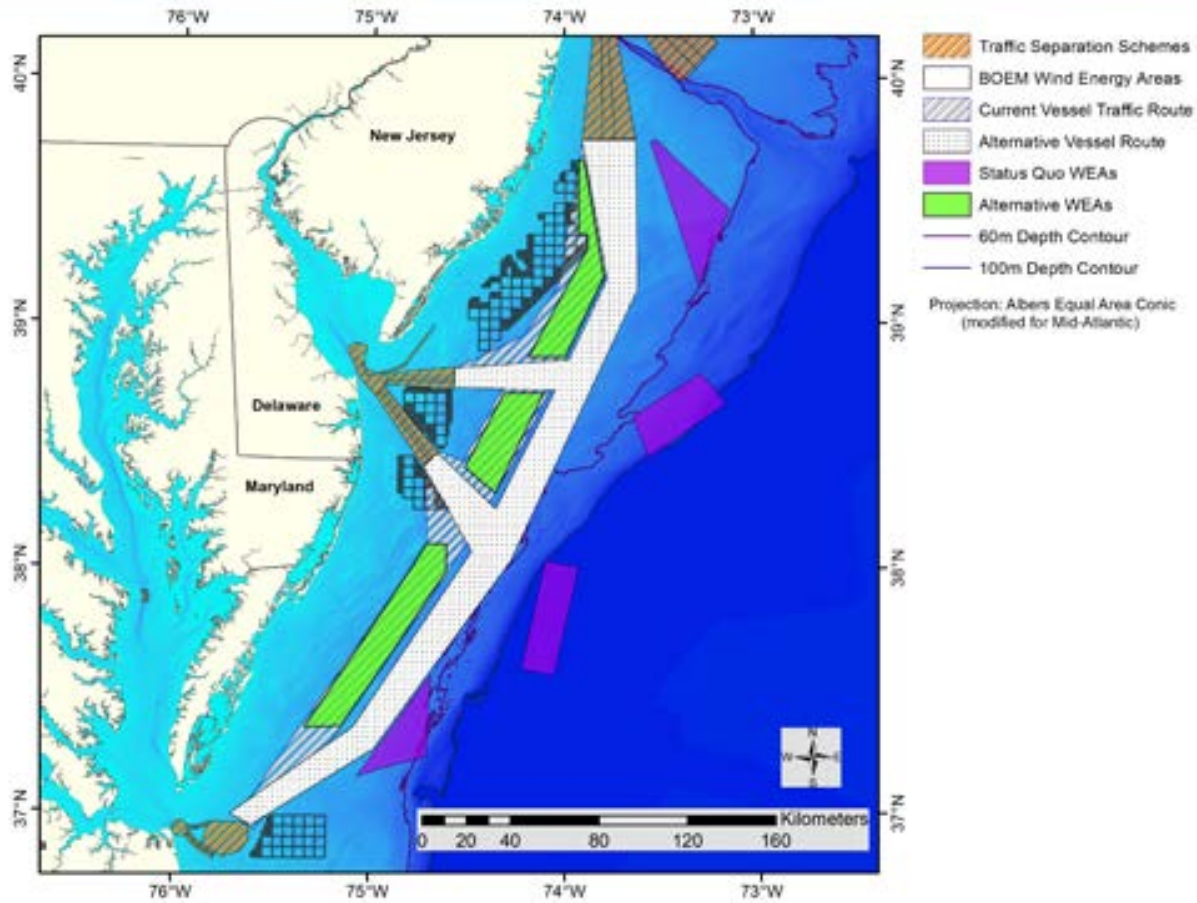
Construction and access to offshore wind turbines is across a major regional shipping lane



COAST GUARD PORT STUDY HEAT MAP



UDEL PROPOSAL



Proposal for alternate routes published by Univ. of Delaware

Is this reasonable?



CONTACT INFORMATION

Doug Copeland

Regional Development Manager
EDF Renewable Energy
40 W. Evergreen St.
Philadelphia, PA 19118

267-535-1366

Doug.Copeland@edf-re.com