

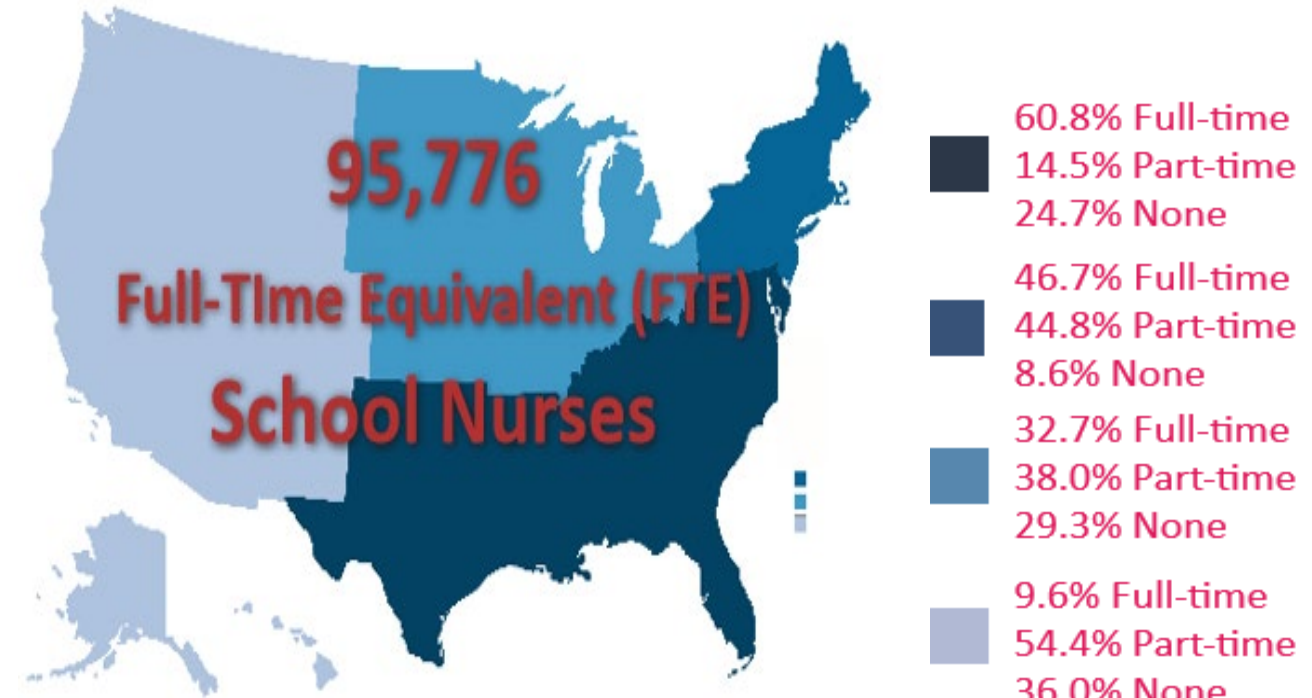
Forum for Children's Well-Being A School Nurse Perspective

Dr. Kate King DNP, MS, RN, LSN
President-elect, NASN

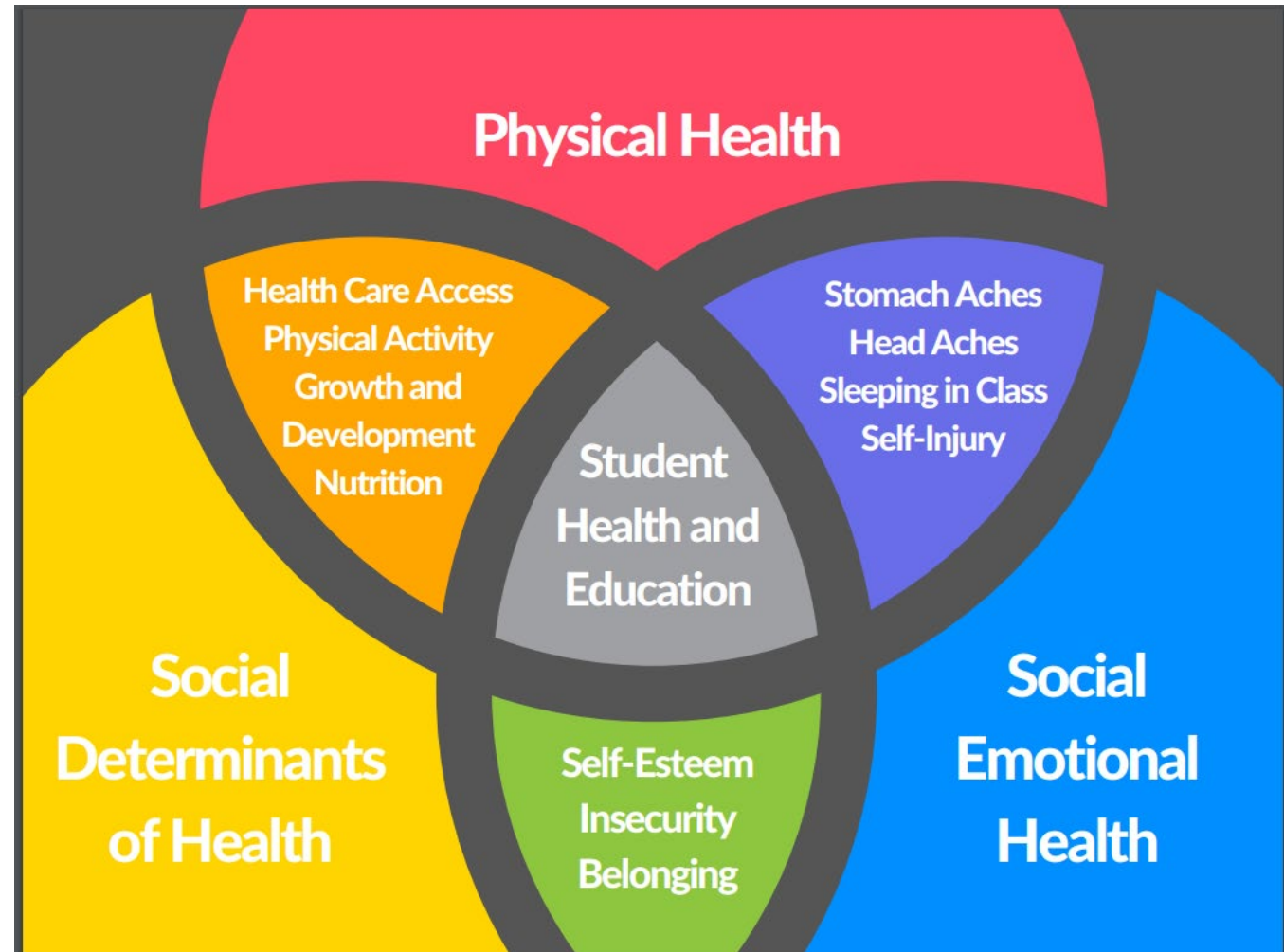
School Nurse Workforce



- 35.3% of schools employ part-time school nurses (< 35 hours)
- 39.3% of schools employ full-time school nurses (> 35 hours)
- Across the country 25.2% of schools did not employ a school nurse



School Nurses: Frontline Workers in Times of COVID and Beyond



Covid-19 Reference



School
Reopening/Closing



Screening Students
and Staff



Healthy Hygiene
Practices



Personal Protective
Equipment



Social and
Emotional Health



Healthy
Environments



Screenings and
Immunizations



Special
Populations



Testing and
Vaccinations



Operating
Virtually



Data
Collection

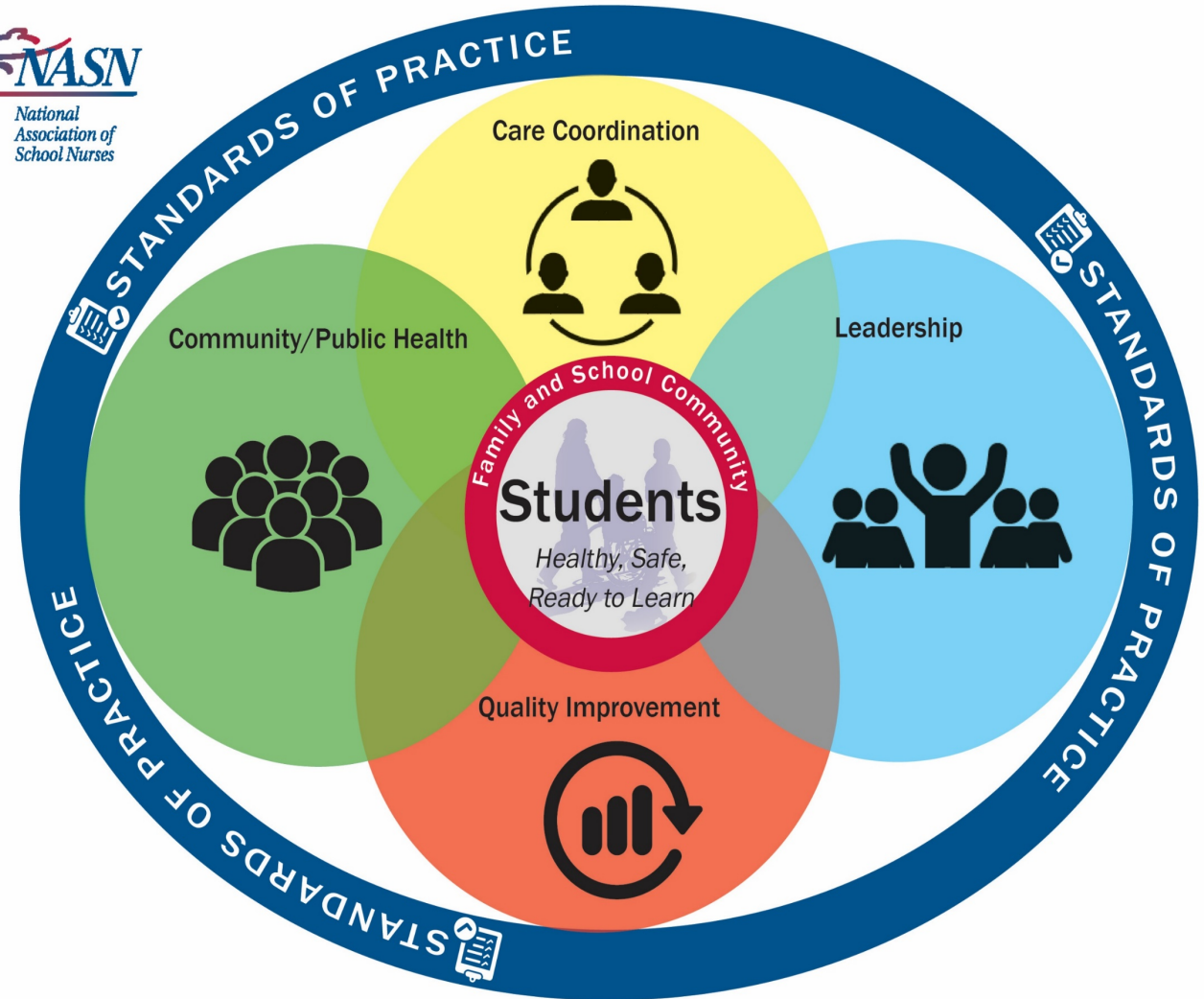
<https://schoolnursenet.nasn.org/covid19ref/home>

School Nurses are often the first contact for students at risk

- Physical manifestations of Social/Emotional distress
 - Head aches
 - Stomach aches
 - Frequent office visits
 - Symptoms of depression:
 - Sleep
 - Acting out
- Chronic Absenteeism

School Nurses: Sentinels of School Health

- Care Coordination
 - Direct Care
 - Referrals
 - Team Collaboration
- Public/Community Health
 - Contact Tracing
 - Mitigation
 - Education
- Quality Improvement-Data Collection
- Leadership
 - Education of staff
 - Partnerships



School Nurse Role in SEL needs

- Physical Activity Promotion
- Good nutrition
- Daily Touch Base
- Listening
- Referrals
- Team work
- Education

Internal Partners- School Support Staff



No More Silos

- School
 - Nurses
 - Psychologists
 - Counselors
 - Social Workers
 - Transition Coordinators
 - PBIS Coordinators

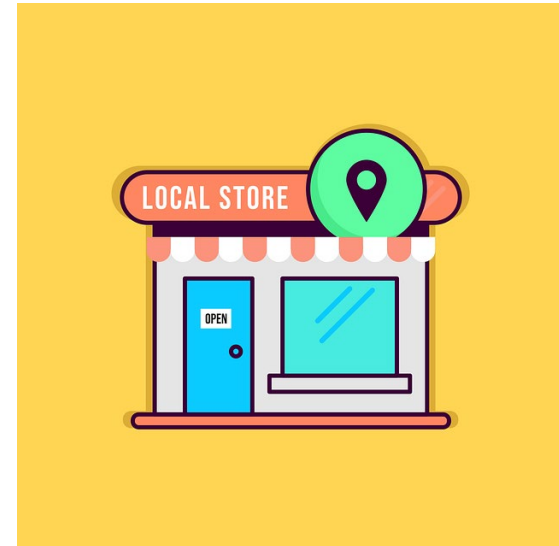
External Partners



<https://www.flickr.com/photos/23715955@N05/8727240790/in/photostream>



Photo by Debby Hudson on Unsplash



Parks and Rec



National
Association of
School Nurses

Staff Health

Before COVID-19- Minimal Role

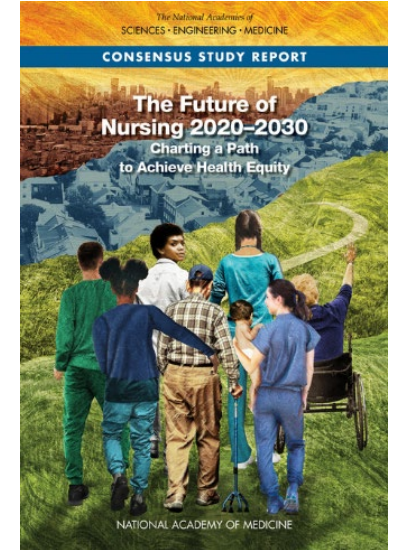
- Limited to
 - Programs- Biggest Loser
 - Education- Personal Cases
 - Assessment- Blood Pressure checks
 - Emergencies

After COVID-19-Increased Engagement

- Mitigation Strategies
- Contact Tracing and Investigation
- Mental Health Promotion
 - Anxiety
 - Education
 - Referral

The Future of Nursing 2020-2030

- School and public health nurses play a vital role in advancing health equity. Adequate funding for these nurses is essential if they are to take on that role.
- School nurses are front-line health care providers, serving as a bridge between the health care and education systems and other sectors.
- School nurses focus on the physical and mental health of students in the context of educational environments. They serve as both essential care providers for individuals and links to broader community health issues through the student populations they serve.
- School and public health nurses play a vital role in advancing health equity. Adequate funding for these nurses is essential if they are to take on that role.



National Academies of Sciences, Engineering, and Medicine 2021. The Future of Nursing 2020-2030: Charting a Path to Achieve Health Equity. Washington, DC: The National Academies Press. <https://doi.org/10.17226/25982>.