

The National Academies of
SCIENCES • ENGINEERING • MEDICINE

**Exploring Psychedelics and Entactogens as Treatments for Psychiatric Disorders:
A Workshop**

Workshop Speaker Biographical Sketches

Sarah H Lisanby, M.D., (Co-chair), *please see planning committee biographical sketches.*

Gerard Sanacora, M.D., Ph.D., (Co-chair), *please see planning committee biographical sketches.*

Paul Appelbaum, M.D., *please see planning committee biographical sketches.*

Captain Sean Belouin, United States Public Health Service (USPHS), began his uniformed service career in 1988 at the age of 18 when he enlisted in the United States Army. At 19, he graduated from the Army's Warrant Officer Flight Training Program as a Warrant Officer (W1) earning his Army aviator wings as a helicopter pilot. During his eight years of combined active Army duty and National Guard service, Chief Warrant Officer (CW2) Belouin had earned his commercial and instrument helicopter ratings, fixed wing private pilot rating, and had become qualified in three different military aircraft. While CW2 Belouin was serving in the Army National Guard, he advanced his education by pursuing a professional Bachelor of Science degree in Pharmacy from the University of Connecticut, graduating and becoming a pharmacist in 1997. After serving as a civilian community pharmacist for two years, CW2 Belouin joined the ranks of the USPHS in 1999 as a Pharmacy Officer at the rank of Lieutenant Junior Grade (LTJG), and he would go on to earn his clinical doctorate in pharmacy from Shenandoah University in 2006. Entering his 22nd year in the USPHS, CAPT Belouin has served in a number of regulatory and policy leadership roles within the Food and Drug Administration (FDA) and the Substance Abuse and Mental Health Services Administration (SAMHSA). During his USPHS career, CAPT Belouin has volunteered for a battery of national disaster deployments and temporary duty assignments, lectured as an adjunct professor for the Uniformed Services University of the Health Sciences (USUHS) and Shenandoah University, and served as a credentialed clinical pharmacist at the Walter Reed National Military Medical Center (WRNMMC) and now with the National Institutes of Health (NIH) Clinical Center.



Luana Colloca, M.D., Ph.D., is a physician-scientist, full professor at University of Maryland, Baltimore, Director of the TL1 program, Chair of the Pain and Placebo Special Interest Group for the International Association for Study of Pain (IASP) society and the Treasurer for the Society for Interdisciplinary Studies of Placebo (SIPS). Prof. Colloca leads an NIH-funded research portfolio on endogenous pain and other symptoms modulation related to placebo/nocebo effects as well as translational research on pharmacological and nonpharmacological treatments such as virtual reality and music. Her findings have been published in top-ranked journals including JAMA, NEJM, Biological Psychiatry, Pain, and Lancet Neurology. Her research has raised interest in the scientific community and the society with a large scientific dissemination via channels such as The National Geographic, The New Scientist, Washington Post, Science daily, Boston Globe, The



New Yorker, Nature, The Guardian, The Wall Street Journal, News and World Reports and USA Today magazines among others.

Anthony Coulson is the President and Owner of NTH Consulting, Inc. Mr. Coulson focuses on providing



technical assistance on new drug development, substance abuse, US border, and gun policy for International organizations and governments. He is a nationally recognized expert in drug trafficking, gun, immigration and domestic violence issues and acts as a consultant and advisor to US and international news organizations. Mr. Coulson retired Drug Enforcement Administration (DEA), a component of the United States Department of Justice (DOJ), in 2010, Assistant Special Agent in Charge after 28 years. He has managed grants for the DOJ in Indian Country, Rural States, and Border Communities. Mr. Coulson graduated from Northeastern University in Boston, Massachusetts, in 1982, with a Bachelor of Science Degree in Criminal Justice and currently finishing his Masters' Degree in Criminal Justice at Niagara University. He was Travelli/Ayling Scholar at Northeastern and was a Northeastern Co-operative Education Student of Year in 1982. Mr. Coulson has received the DEA Administrator's Award for Exceptional Service (DEA's highest award) in 1996 and 2002. He has attended Executive Leadership courses at Duke University's Fuqua School of Business and John Hopkins University.

Charma D. Dudley, Ph.D., FPPR, *please see planning committee biographical sketches.*

Corine de Boer, M.D., Ph.D. is the Chief Medical Officer at MAPS Public Benefit Corporation. She received



her medical degree from Radboud University in Nijmegen, the Netherlands and completed residency and fellowship training in pediatrics and pediatric nephrology. After she moved to the United States, for the last 20+ years, she has contributed to the development of meningococcal and hepatitis vaccines during her tenure at GSK vaccines (formerly Novartis Vaccines and Chiron Corporation) and Dynavax prior to starting her own consulting company where she provides strategic advice and support for a variety of clients working on biologics, small molecule/polymer therapeutics and vaccines. She formally joined the MPBC team in 2000 after assisting them previously in the development of the Pediatric Plans for MDMA-AT. The opportunity that psychedelics provide in the treatment of PTSD and other indications is an exciting scientific field where she feels honored to play a small part in.

Caroline Dorsen, Ph.D., FNP-BC, is the Associate Dean of Advanced Practice and Clinical Partnerships at



Rutgers School of Nursing. Dr. Dorsen is a nurse scholar, nurse educator, and nurse clinician whose passion is the interface between health and social justice. She is a nationally and internationally recognized expert and clinical scholar on sexual and gender minority health who has authored or co-authored over 35 publications and has received numerous awards for her writing. In recognition of her expertise as a teacher and educator, Dr. Dorsen was the 2020 recipient of the Dean's Distinguished Teaching Award at NYU Meyers College of Nursing. In 2020, she was also the recipient of NYU's Martin Luther King Faculty Award sponsored by the President and Provost for "exemplifying the spirit of Dr. Martin Luther King Jr. through teaching excellence, leadership, social justice activism, and community building." Notably, she was the first nursing faculty member to receive this prestigious award at NYU. Dr. Dorsen was a faculty member and academic leader at NYU Meyers College of Nursing for 15 years prior to

coming to Rutgers in the Fall, 2020. At Meyers, she served as the Program Director of the Adult-Gerontology Primary Care Nurse Practitioner and the Family Nurse Practitioner Programs, was the nursing lead for the for SARET, an NIH-funded (R25) interprofessional substance use training program housed at the NYU School of Medicine, and was an affiliated investigator with the Center for Drug Use and HIV Research (CDUHR). She has practiced as an FNP for the past 20 years and has significant expertise on the intersection of primary care, behavioral health and social determinants of health. Dr. Dorsen currently serves as the Vice Chairman of the Board of Directors for Community Health Network (CHN) and is the Nursing Chair (2018-2020) for GLMA: Health Professionals Advancing LGBTQ+ Equality. Collaborating with Senior Editor Dr. Perry Halkitis (Dean of Rutgers School of Public Health), Dr. Dorsen is a Senior Associate Editor of the journal *Annals of LGBTQ Public and Population Health*. In the spirit of collaboration between our two schools, she is a member of the SPH's HIV/AIDS Research Working Group. She received a BA in Anthropology from University of California at Berkeley, a BS in Nursing from NYU Meyers College of Nursing, a Master's in Nursing as a Family Nurse Practitioner from Yale School of Nursing, and a PhD in Nursing Research and Theory from NYU Meyers. She completed a post-doctoral fellowship in translational science at the Clinical and Translational Science Institute at NYU Langone Health.

Walter Dunn, M.D., is an Assistant Professor of Psychiatry at the University of California, Los Angeles, and the section chief for mood disorders at the Greater Los Angeles (GLA) VA Healthcare system. He serves on the FDA Psychopharmacologic Advisory Committee, and is on the executive and scientific board of the International Society for CNS Clinical Trials Methodology (ISCTM). Dr. Dunn is the medical director of the GLA Mood Disorders Clinic and the Interventional Psychiatry Service. His clinical and research expertise includes work in psychosis, mood disorders, and PTSD. Dr. Dunn established the Interventional Psychiatry Service to bring cutting-edge novel therapeutics to address the unique needs of veterans.



The service offers transcranial magnetic stimulation (TMS) and ketamine/esketamine treatments for mood disorders, and develops innovative therapies for treatment resistant psychiatric conditions. Dr. Dunn has a particular focus in integrated therapeutics that combine medication or device-based treatments with psychotherapy to achieve synergies that better target psychiatric disorders. To that end, he has been involved in the psychedelics space ranging from clinical studies to issues of trial design and regulation. He believes that while psychedelics have much to offer in terms of clinical efficacy, their greater contribution will be to facilitate a better understanding of the human mind and highlight the importance of interpersonal connections in mental health treatments.

Gabriella Gobbi, M.D., Ph.D., is interested in understanding the causes of mental diseases and in the discovering new treatments. In particular, her laboratory is studying the short- and long-term effects of cannabis use in mood and anxiety and the potential beneficial effects of the drugs acting on the endocannabinoid system (endogenous cannabis) in the cure of mental diseases. The lab also studies the action mechanism of hallucinogens and their potential therapeutic effects. In addition, her laboratory examines the effect of melatonin in mood, anxiety, and sleep regulation in an effort to understand how novel selective ligands for melatonin receptors (called MT1 and MT2 receptors) can be used to treat seasonal depression, major



depression, sleep disorders, and other neuropsychiatric conditions. The laboratory approach spans from bench to bedside, bridging the gaps between fundamental and clinical research. Laboratory techniques include in vivo electrophysiology, optogenetics, behavioural pharmacology, and neurochemistry. Dr Gobbi is also a psychiatrist in the Mood Disorders Program at the McGill University Health Centre. Her other

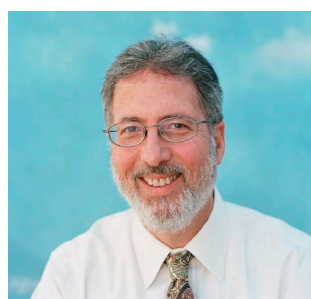
interests include the psychopharmacology of violent behaviour and the neurobiological consequences of paternal separation.

Javier Gonzalez-Maéso, Ph.D., *please see planning committee biographical sketches.*



Joshua Gordon, M.D., Ph.D., is the Director of the National Institute of Mental Health (NIMH) and Chief of the Integrative Neuroscience Section at the National Institute of Neurologic Disorders and Stroke (NINDS). Dr. Gordon pursued a combined M.D.-Ph.D. degree at the University of California, San Francisco (UCSF). Medical school coursework in psychiatry and neuroscience convinced him that the greatest need, and greatest promise, for biomedical science was in these areas. During his Ph.D. thesis with Dr. Michael Stryker, Dr. Gordon pioneered the methods necessary to study brain plasticity in the mouse visual system. Upon completion of the dual degree program at UCSF, Dr. Gordon went to Columbia University for his psychiatry residency and research fellowship because of the breadth and depth of the research opportunities there. Working with Dr. Rene Hen, Dr. Gordon and colleagues studied the role of the hippocampus, a brain structure known to be important for memory and emotional processes associated with anxiety and depression. He joined the Columbia faculty in 2004 as an assistant professor in the Department of Psychiatry.

Roland Griffiths, Ph.D., *please see planning committee biographical sketches.*



Charles Grob, M.D., is Professor of Psychiatry and Pediatrics at the UCLA School of Medicine and the Director of the Division of Child and Adolescent Psychiatry at the Harbor-UCLA Medical Center. He previously held faculty positions at the Johns Hopkins School of Medicine and the University of California at Irvine. He has conducted approved clinical research with psychedelics since the early 1990s. From 2004-2008 he was the Principal Investigator of the first study in several decades to examine the use of a psilocybin treatment model for patients with advanced-cancer anxiety. He has also conducted research into the range of effects of MDMA, in both normal volunteers and in a selected subject population of adult autistics with severe social anxiety. And, he has conducted a series of ayahuasca research studies in Brazil. Over the last thirty years Dr. Grob has published numerous articles and chapters on psychedelics in the medical and psychiatric literatures and he is the editor of *Hallucinogens: A Reader* (Putnam/Tarcher, 2002), co-editor (with Roger Walsh) of *Higher Wisdom: Eminent Elders Explore the Continuing Impact of Psychedelics* (SUNY Press, 2005) and co-editor (with James Grigsby) of the recently published *Handbook of Medical Hallucinogens* (Guilford Press, 2021). He is a founding board member of the Heffter Research Institute.

Shirley Holloway, Ph.D., is President of the NAMI Board of Directors, for a second term and is currently Vice President of NAMI Alaska and a member of NAMI Anchorage.

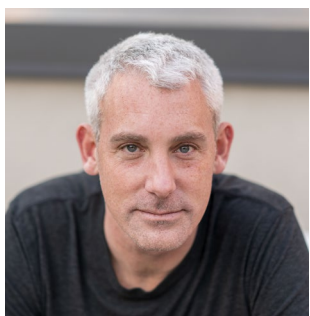


She first found NAMI after the loss of her daughter to mental illness. Through her work with NAMI, she hopes to improve access and quality of mental health services to underserved populations.

Shirley provides consulting services through her business, Leadership for Excellence. Her areas of expertise include developing and improving relationships, processes and policies for both governing boards and their executive leadership. Her career includes being a teacher for the deaf and hard of hearing, speech pathologist, principal, superintendent, college professor and college president, as well as the

Commissioner of Education and Early Development for the state of Alaska. She has also served as a member of the Alaska State Board of Education, Regent of Charter College, the President of Sheldon Jackson College and as a board member for the Blood Bank of Alaska, the Special Olympics, the CIRI Foundation, the Ilisagvik Foundation and NAMI Anchorage. Shirley is also known as "Quvian," the Inupiat name given to her by the people of Utqiagvik (previously known as Barrow), which means "person of joy." She earned her Ph.D. at Gonzaga University.

Daniel Karlin, M.D., is the Chief Medical Officer at MindMed (Mind Medicine Inc). He is board-certified in Psychiatry, Addiction Medicine, and Clinical Informatics. Previously, he was the Co-founder and the CEO of HealthMode, a company that developed digital measurement technology for medicine and clinical trials, which was acquired by MindMed. During this time, he also served as the Chief Medical Officer for NightWare, where he led development through FDA clearance of the first closed-loop digital therapeutic build on consumer hardware. He was previously the Head of Clinical, Informatics, and Regulatory Strategy for Digital Medicine at Pfizer, having passed through several roles on the way to this position including Senior Director, Quantitative Medicine, Group Lead for Human Biology and Medical Informatics with Pfizer's Neuroscience Research Unit in Cambridge, MA. He is an Assistant Professor at Tufts University School of Medicine in Boston and had been the Director of Psychiatry Informatics, and the Associate Training Director for Psychiatry. He is the Co-Founder and former Chief Medical Officer of Column Health, an innovative technology-enabled addiction and psychiatry treatment startup. Dr. Karlin trained in Psychiatry at Tufts Medical Center, attended medical school at the University of Colorado School of Medicine, graduate school for Clinical Informatics and cognitive science, and undergraduate studies in Neuroscience and Behavior at Columbia University.



Gitte Moos Knudsen, M.D., DMSc, is a professor at University of Copenhagen and consultant neurologist at Copenhagen University hospital Rigshospitalet, Denmark. She is chair of the Neurobiology Research Unit (nru.dk) and director of the The Center for Experimental Medicine Neuropharmacology (NeuroPharm.eu) and of BrainDrugs (<https://braindrugs.nru.dk/>). She is also the President of the European College of Neuropsychopharmacology (ecnp.eu). Dr. Knudsen is a translational neurobiologist and clinical neurologist with interest in advanced methodological developments that she subsequently applies in her research to address pertinent neurobiological and clinical issues. She uses molecular, functional and structural neuroimaging techniques in humans and in experimental studies to study neuropharmacology and the neurobiology of the brain diseases.



Steven Levine, M.D., is a board-certified psychiatrist internationally recognized for his contributions to advancements in mental health care. He currently serves as Senior Vice President of Patient Access and Medical Affairs for COMPASS Pathways and is co-founder and non-executive Chairman of the Board of Heading Health. Dr. Levine completed internship and residency in psychiatry at New York – Presbyterian Hospital – Weill Cornell. He then completed fellowship subspecialty training in psychosomatic medicine/psycho-oncology at Memorial Sloan Kettering Cancer Center/New York Presbyterian Hospital. He has published extensively in both peer-reviewed journals and popular media,



presented to both professional and lay audiences around the world, served in leadership roles for professional societies and not-for-profit entities, and received numerous awards for leadership and service.

Robert Malenka, M.D., Ph.D., is the Pritzker Professor of Psychiatry and Behavioral Sciences, Director of



the Nancy Pritzker Laboratory and Deputy Director of the Wu Tsai Neurosciences Institute. After graduating from Harvard College he received an M.D. and a Ph.D. in neuroscience in 1983 from Stanford University School of Medicine. Over the ensuing 6 years he completed residency training in psychiatry at Stanford and 4 years of postdoctoral research at the University of California, San Francisco (UCSF). In 1989, he was appointed Assistant Professor of Psychiatry and Physiology at UCSF, at which he reached the rank of Full Professor in 1996. He returned to the Stanford University School of Medicine in 1999. He is an elected member of the National Academy of Sciences and the

National Academy of Medicine as well as an elected fellow of the American Academy of Arts and Sciences, the American Association for the Advancement of Science, and the American College of Neuropsychopharmacology. He has served on the National Advisory Council on Drug Abuse and as a Councilor for the Society for Neuroscience and the American College of Neuropsychopharmacology. He is on the scientific advisory boards of numerous non-profit foundations and biotechs. He has been the recipient of numerous awards including: the Society for Neuroscience Young Investigator Award (1993); the Daniel Efron Award from the American College of Neuropsychopharmacology (1998); the Kemali Foundation International Prize in Neuroscience (2000); the CINP-Lilly Neuroscience Basic Research Award (2002), the Perl/UNC Neuroscience Prize (2006), the NARSAD Goldman-Rakic Prize for Outstanding Neuroscience Research (2010), the Pasarow Foundation Award for Extraordinary Accomplishment in Neuropsychiatry Research (2011), and the Society for Neuroscience Julius Axelrod Prize (2016). His papers have been cited >100,000 times and have provided foundational knowledge about the mechanisms of synaptic plasticity and modulation in the mammalian brain. His laboratory continues to conduct research on the molecular mechanisms of neural communication as well as the role of circuit dysfunction in brain disorders including addiction, Alzheimer's, autism, and depression.

Tristan McClure Begley, Ph.D., *please see planning committee biographical sketches*

Javier Muñiz, M.D., *please see planning committee biographical sketches.*

David E. Olson, Ph.D., studied chemistry and neuroscience at Stanford University and the Stanley Center for



Psychiatric Research at the Broad Institute of MIT and Harvard. His academic lab at the University of California, Davis discovered that psychedelics promote structural and functional neuroplasticity in the cortex. They coined the term "psychoplastogen" to describe small molecules that produce rapid and long-lasting psychedelic- and ketamine-like effects on neuronal structure, and they invented the first non-hallucinogenic psychoplastogens capable of producing sustained therapeutic effects in preclinical models after a single dose. Professor Olson's expertise spans central nervous system medicinal chemistry, molecular/cellular neurobiology, and behavioral neuropharmacology. He is an associate editor at ACS

Chemical Neuroscience and has received numerous awards including the Jordi Folch-Pi Award from the American Society for Neurochemistry, the Sigma Xi Young Investigator Award, the Life Young Investigator Award, among many others.

Nora Hennessy Osowski, M.P.H. is a public health professional with over twenty years of experience working in the field of health research and policy. She earned a bachelor's degree in health science from George Mason University and a master's degree in public health from the Milken Institute School of Public Health at George Washington University. Ms. Osowski has held positions within the federal government and with various nonprofit organizations, including the National Academy of Medicine, where she previously served as an Associate Program Officer. Her recent professional activities have focused on stakeholder engagement in research and patient-centered outcomes research. Ms. Osowski is currently pursuing a Bachelor of Science in Nursing at York College of Pennsylvania, which she expects to complete in December of 2022. She is a member of the Sigma Theta Tau International Honor Society of Nursing, Eta Eta chapter. She lives in Stewartstown, PA with her husband Ken, a professor of music at York College, and their two dogs and four cats.



Katrin Preller received her M.Sc. (Neuropsychology and Clinical Psychology) from University of Konstanz, Germany. She joined the University of Zurich where she investigated the neurobiological long-term effects of cocaine, MDMA, and heroin use. After completing her PhD, she investigated the effects of psychedelics on self-perception and social cognition at the Neuropsychopharmacology and Brain Imaging Lab. She received a SNSF PostDoc mobility fellowship and worked at the Wellcome Trust Centre for Neuroimaging, UCL, London, and Yale University, New Haven. Subsequently, she was appointed as Group Leader at the University of Zurich where she is investigating the mechanistic and clinical effects of psychedelic substances.



Charles Raison, M.D., is the Mary Sue and Mike Shannon Distinguished Chair for Healthy Minds, Children & Families and Professor, School of Human Ecology, and Professor, Department of Psychiatry, School of Medicine and Public Health, University of Wisconsin-Madison. Dr. Raison also serves as Director of Clinical and Translational Research for Usona Institute, as Director of Research on Spiritual Health for Emory Healthcare and as Visiting Professor in the Center for the Study of Human Health at Emory University in Atlanta, GA. Dr. Raison's research focuses on the examination novel mechanisms involved in the development and treatment of major depression and other stress-related emotional and physical conditions, as well as for his work examining the physical and behavioral effects of compassion training. More recently, Dr. Raison has taken a leadership role in the development of psychedelic medicines as potential treatments for major depression. He was named one of the world's most influential researchers by Web of Science for the decade of 2010-2019. With Vladimir Maletic he is author of "The New Mind-Body Science of Depression" published by W.W. Norton in 2017.



Srinivas Rao, M.D., Ph.D., please see *planning committee biographical sketches*.

Collin Reiff, M.D., is an assistant professor of psychiatry at the New York University Grossman School of Medicine, where he specializes in treating trauma and substance use disorders in the Steven A. Cohen Military Family Clinic. He has co-authored numerous book chapters and peer reviewed publications on psychedelic compounds. His first author publication, *Psychedelics and Psychedelic-Assisted Psychotherapy*, which he wrote with the Work Group on Biomarkers and Novel Treatments, a Division of the American Psychiatric Association Council of Research was recently published in *The American Journal of Psychiatry*.



Melissa A. Simon M.D. M.P.H., is the George H. Gardner Professor of Clinical Gynecology, Vice Chair of Research in the Department of Obstetrics and Gynecology at Northwestern University Feinberg School of Medicine. She is also the Founder and Director of the Center for Health Equity Transformation and the Chicago Cancer Health Equity Collaborative. She serves as the Robert H. Lurie Comprehensive Cancer Center's Associate Director for Community Outreach and Engagement. She is an expert in implementation science, women's health across the lifespan, minority health, community engagement and health equity. She has been recognized with numerous awards for her substantial contribution to excellence in health equity scholarship, women's health and mentorship, including her recent election to the National Academy of Medicine and the Association of American Physicians. She has received the Presidential Award in Excellence in Science Mathematics and Engineering Mentorship and is a Presidential Leadership Scholar. She is a former member of the US Preventive Services Task Force and serves on the NIH Office of Research in Women's Health Advisory Committee.



Dominic Sisti, Ph.D., is an assistant professor of Medical Ethics & Health Policy at the University of Pennsylvania. He holds secondary appointments in the Department of Psychiatry and the Department of Philosophy. Dr. Sisti examines ethical and policy challenges in mental health care, including long-term psychiatric care for individuals with serious mental illness, clinical ethics issues in correctional settings, and ethical issues in psychedelics research and therapy. Dr. Sisti's writings have appeared in journals such as *JAMA*, *Psychiatric Services*, the *Hastings Center Report*, and the *Journal of Medical Ethics* and has been featured in popular media outlets such as the *New York Times*, *The Economist*, *NPR*, and *The Atlantic*. Dr. Sisti teaches graduate courses on clinical ethics, ethics in behavioral health care, and social media, e-health, and biomedical ethics. Professor Sisti received his bachelor's degree in biology from Villanova University, a master of bioethics from the University of Pennsylvania, and his doctorate in philosophy from Michigan State University. He was an Edmund Pellegrino Fellow at the Center for Clinical Bioethics at Georgetown University. His research has been funded by the Thomas Scattergood Behavioral Health Foundation, the Greenwall Foundation, and The Quattrone Center for the Fair Administration of Justice, the Leonard Davis Institute.



Lori Tipton is a mother, author, playwright, public speaker, and advocate for the use of psychedelics in the field of mental health. In 2017 she was the first person in New Orleans, Louisiana to take part in an FDA-approved clinical trial of MDMA (also known as Ecstasy) to treat PTSD. This treatment involved multiple MDMA therapy sessions which dealt directly with the most devastating experiences of her life, which include depression, murder, suicide, natural disaster, rape and self-sabotage through drug/alcohol abuse. Her experience with MDMA therapy was nothing short of life-saving and she has felt very compelled to share her journey.



Rita Valentino, Ph.D., please see *planning committee biographical sketches*.

Nora Volkow, M.D., is Director of the National Institute on Drug Abuse (NIDA) at the National Institutes of Health. NIDA is the world's largest funder of research on the health aspects of drug use and addiction. Dr. Volkow's work has been instrumental in demonstrating that drug addiction is a brain disorder. As a research psychiatrist, Dr. Volkow pioneered the use of brain imaging to investigate how substance use affects brain functions. In particular, her studies have documented that changes in the dopamine system affect the functions of frontal brain regions involved with reward and self-control in addiction. She has also made important contributions to the neurobiology of obesity, ADHD, and aging.



Rosalind Watts, Ph.D., is the Clinical Lead of the Imperial College Psilocybin for Depression trial, Psilodep 2. She trained as a clinical psychologist at UCL and practised psychotherapy for six years before joining the Imperial Psychedelic Research Group, led by Robin Carhart-Harris. Rosalind designed the therapy protocol for Psilodep 2, worked as a lead guide alongside three other therapists and was running the day-to-day aspects of the trial. Rosalind developed a psychedelic therapy model she coined ACE, which stands for, 'Accept, Connect, Embody'. Based on Acceptance and Commitment Therapy (ACT) and the 'Psychological Flexibility Model', she mapped the phenomenological journey that individuals under the influence of a psychedelic go through when they dive into their experience, extract the meaningful lessons to heal, and then integrate and embody them afterwards. Her qualitative research, exploring the perspectives of participants in several psychedelic research studies, gave rise to her interest in the common theme of 'connectedness to Self, others, and the world' as an essential aspect of psychedelic treatment. Rosalind co-hosts the monthly 'Psychedelic Integration Group' in London, alongside Michelle Baker Jones.

