



***U.S. Navy
Supervisor of Salvage
and Diving
NAVSEA 00C***

**Captain Daniel Eldredge (Ret)
Mike Herb - Director Salvage Operations
COMNAVSEASYSYSCOM (SEA 00C2)
Phone: (202) 781- 2736
Email: michael.herb@navy.mil**

WWW.SUPSALV.ORG



Mission

SEA 00C's Mission is to provide technical, operational, and emergency support to the Navy, DoD, and other Federal agencies, in the ocean engineering disciplines of marine salvage, pollution abatement, diving, diving system certification, and underwater ship husbandry.

We prevent, respond to, and minimize the effects of catastrophes and other national emergencies.

By improving readiness, safety, and capability, we enable the Nation, if necessary, to fight and win.

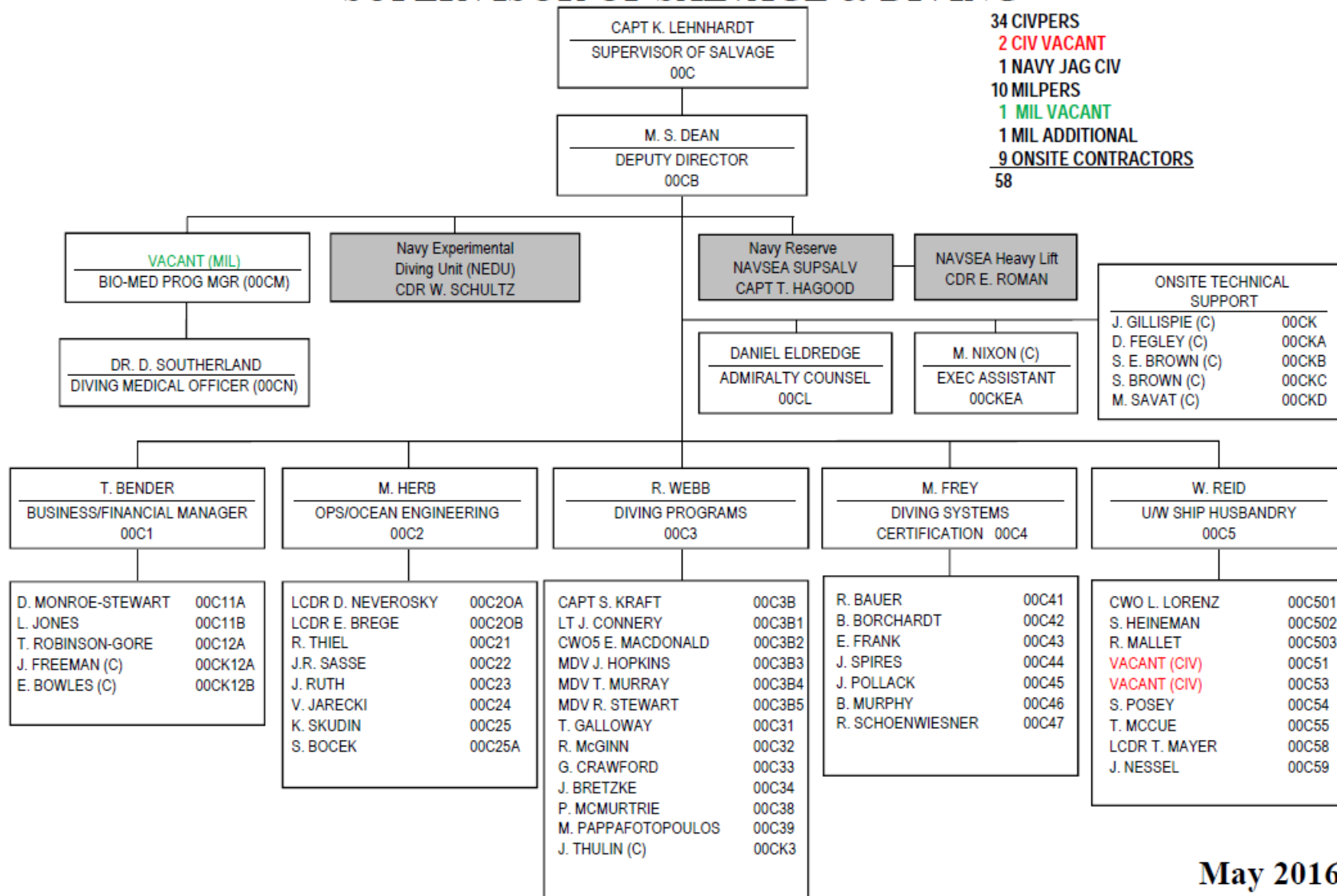




DIRECTOR OF OCEAN ENGINEERING SUPERVISOR OF SALVAGE & DIVING



34 CIVPERS
2 CIV VACANT
1 NAVY JAG CIV
10 MILPERS
1 MIL VACANT
1 MIL ADDITIONAL
9 ONSITE CONTRACTORS
58

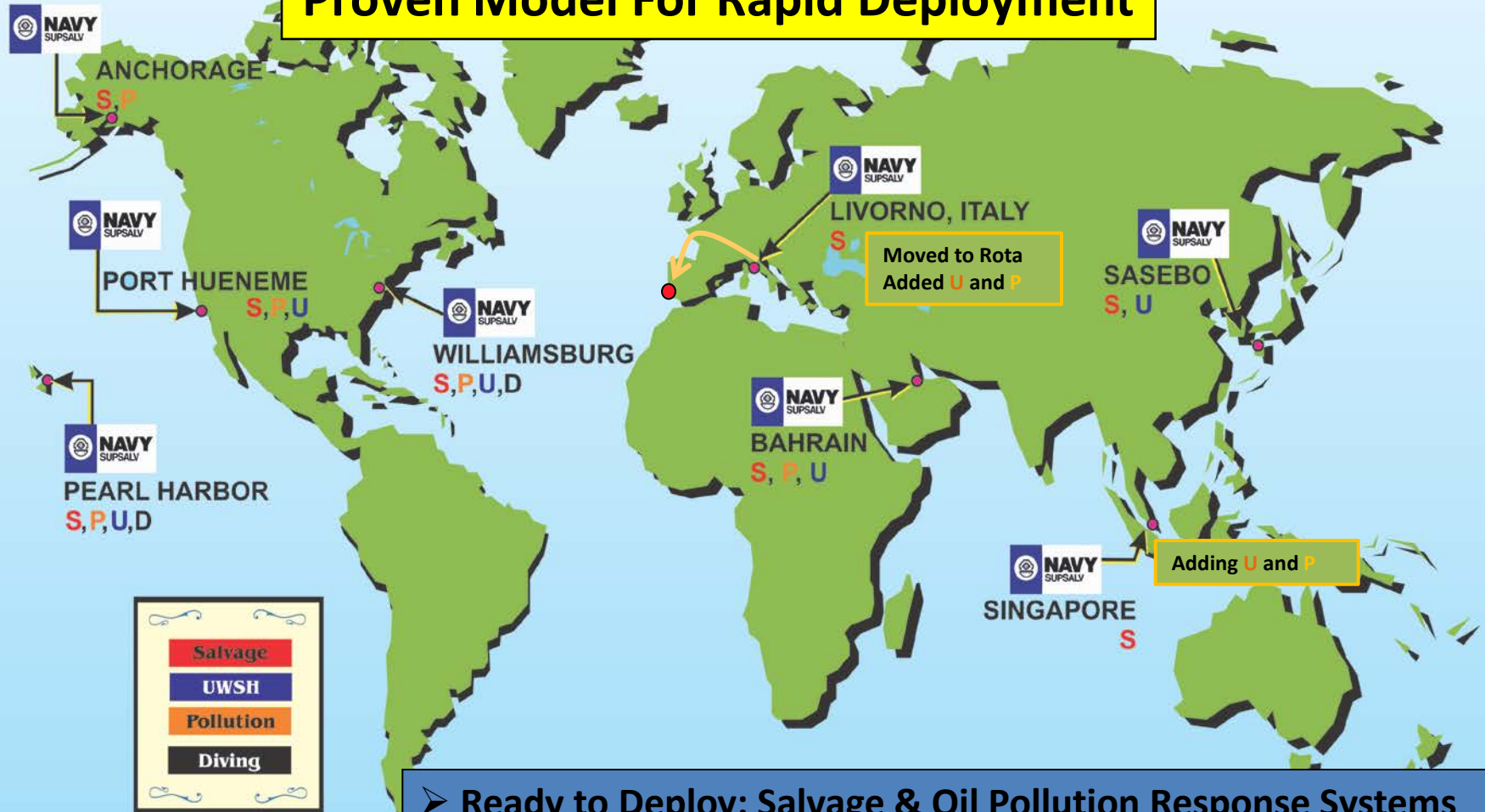


May 2016

EMERGENCY SHIP SALVAGE MATERIAL (ESSM) SITES

Network of emergency response equipment pre-positioned to support SUPSALV and US Fleets

Proven Model For Rapid Deployment



- Ready to Deploy: Salvage & Oil Pollution Response Systems
- Ready to Support: Operators & Maintainers
- Fleet Salvage and Diving Force Enabler

SUPSALV Salvage Contractors



**Full Service
Open & Competitive Award**

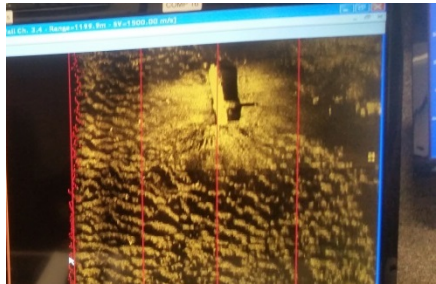


**Deep Ocean Search & Recovery Contract –
Phoenix International**

Snapshot of Recent Operations



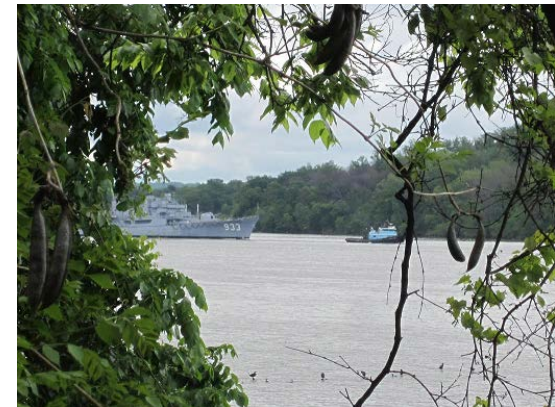
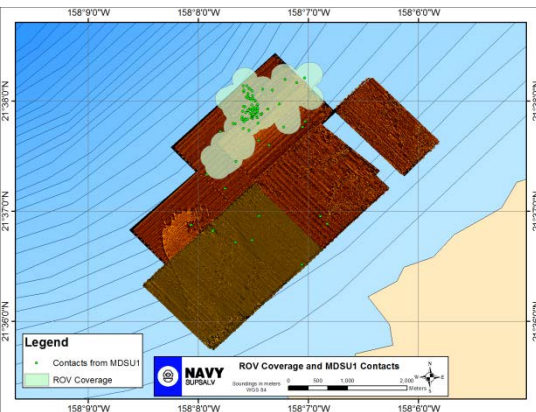
EL FARO



DS BARRY



USMC CH-53s



HYDROS



- **Design Goal:** High power in a small expeditionary footprint.
- **Missions:**
 - Salvage
 - Sub-rescue intervention
 - Vessel environmental assessments & intervention
- **ROV:** 2,000-lb vehicle; 40hp hydraulic system w/ 25gpm @ 2600 psi
 - (2) Five Function Manipulators; Standard Tool Package
- **System size:** Single tractor-trailer and fits on a C130
 - Light configuration: <1,000 fsw
 - Harbor tugs, coastal research and fishing vessels
 - Heavy configuration: <5,000 fsw
 - Offshore self-sufficient with all deck gear and handling system

