



North Dakota Best in Class

Commissioner Chris Jones | January 18, 2023



Who we serve

The Early Childhood section delivers programs and services so kids ages 0 – 5 from all backgrounds and circumstances, their families, and those who support them have the opportunity to realize their potential.

21-23 Budget helped give ND children ages 0 to 5 an opportunity to realize their full potential



New early childhood section

- Coordinated Early Childhood supports and consistency in approach to serve the mixed delivery system



Best in Class program

- Pilot year one: 23 grantees, 28 sections, 371 children
- Pilot year two: 33 grantees, 44 sections, 544 children



Support for EC providers

- Child Care Stabilization
- Workforce Incentives and Stipends
- Child Care Licensing system

The Early Childhood Sections provides services to



Help families access early childhood services so they can go to school or participate in ND's workforce

- Child care referrals
- Navigating early intervention and early childhood special needs



Support early childhood experience providers in their day to day work with children

- Training and Professional Development
- Coaching on health, safety, inclusion
- Quality Improvement



Support children's optimal development and school readiness

- Developmental screening and referrals
- Supporting teachers in assessment and planning for child outcomes

Early Childhood Section Programs and Services



Licensing

Consumer protection that reduces the risk of children being cared for in an unsafe environment



Professional Development

Maintain workforce registry and vet trainers and training, offer technical assistance to potential and existing providers



Quality

Operate quality improvement system, maintain early childhood standards, support inclusive child care



Best in Class

Support to offer quality experiences in the year before kindergarten focused on child outcomes



Family Support and Education

Consumer ed, child care assistance and referrals, early intervention and special education, head start collaboration



EC Operations

CCDBG CCDF state plan, EC technology coordination and support

In ND early childhood is a mixed delivery system, involving both public and private partners using both federal and state funds

Human Services Division

Early Childhood

Children & Family Services

- Home Visitation
- Child Protection
- Abuse Prevention

Developmental Disabilities

- Early Intervention
- In home supports

Economic Assistance

- Child Care Assistance Program

Training and Early Childhood Supports

Trainers, coaches, mentors, consultants

- Health and wellness
- Business success
- Quality improvement
- Inclusive child care

Consumer education resource and referral

Early Childhood Experience Providers

- Early childhood programs including center and home based programs
- Public School PreK
- Early Childhood Special Education services
- Head Start and Early Head Start
- Home visiting providers
- Developmental Disabilities and Early Intervention providers

ND Department of Public Instruction

- Office of Specialized Services
- PK-12 Vision
- K-12 coordinating council
- Comprehensive State Literacy Program
- Child and Adult Care Food Program
- Family Engagement Council

Working Better Together

Early Childhood Family and School Engagement Unit

- IDEA Part B 619 Special Ed for 3-5 year olds
- Head Start Collaboration

Developmental Disabilities

- IDEA Part C Early Intervention for Birth through 35 months

Healthy and Safe Communities

- Special Health Services Unit

DPI Office of Specialized Services

Benefits to North Dakotans

Strong collaboration and co-leadership of the Interagency Coordinating Council connect early intervention services and prevention awareness for children with disabilities and at-risk children ages 0 to five at more touchpoints.



On the Horizon: Working Better Together in 2023-25



**HHS-EC Family & School
Engagement Unit**

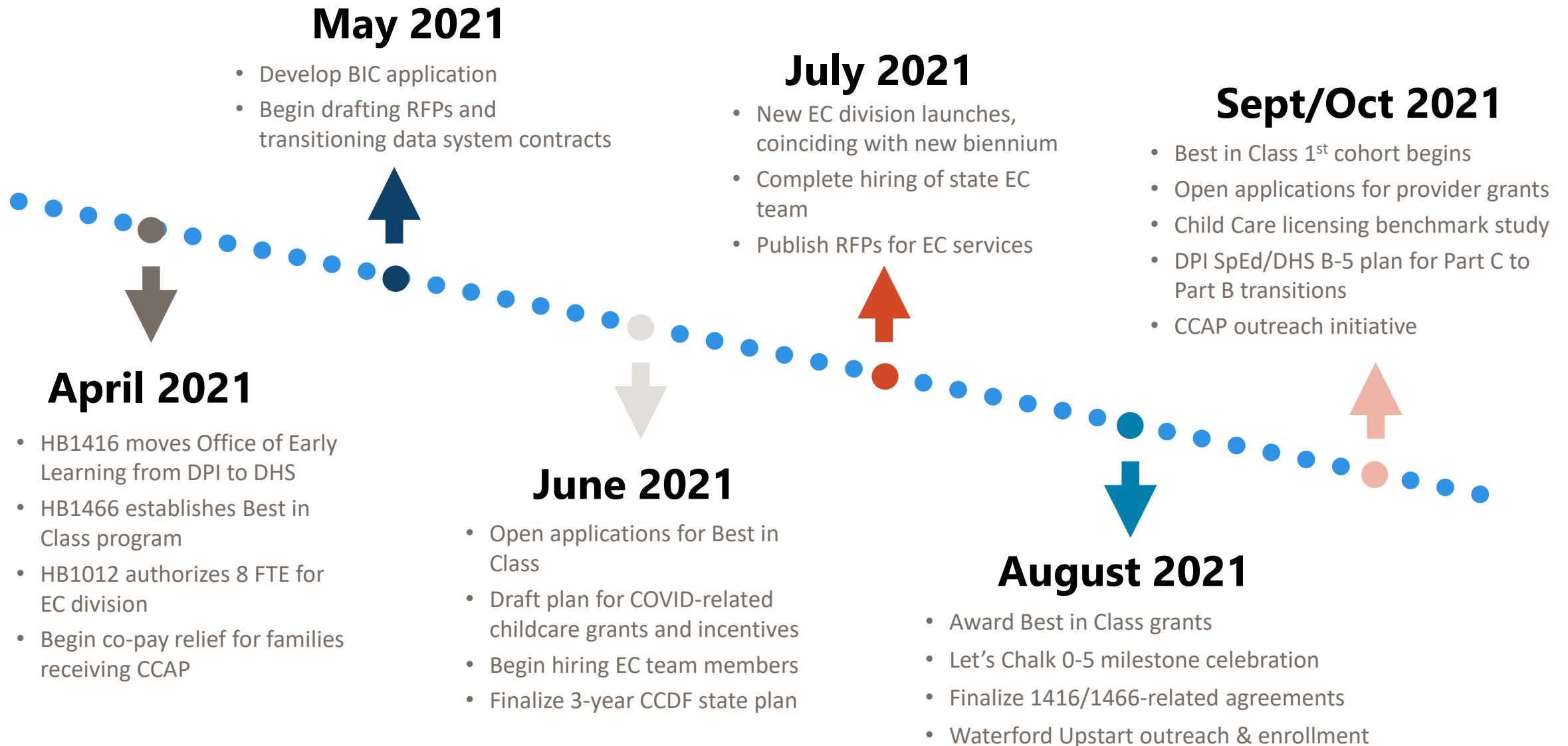
+

HHS-HSC Men's Health Unit

Working together to explore opportunities to bring fatherhood initiatives to families served by Head Start and early childhood services providers

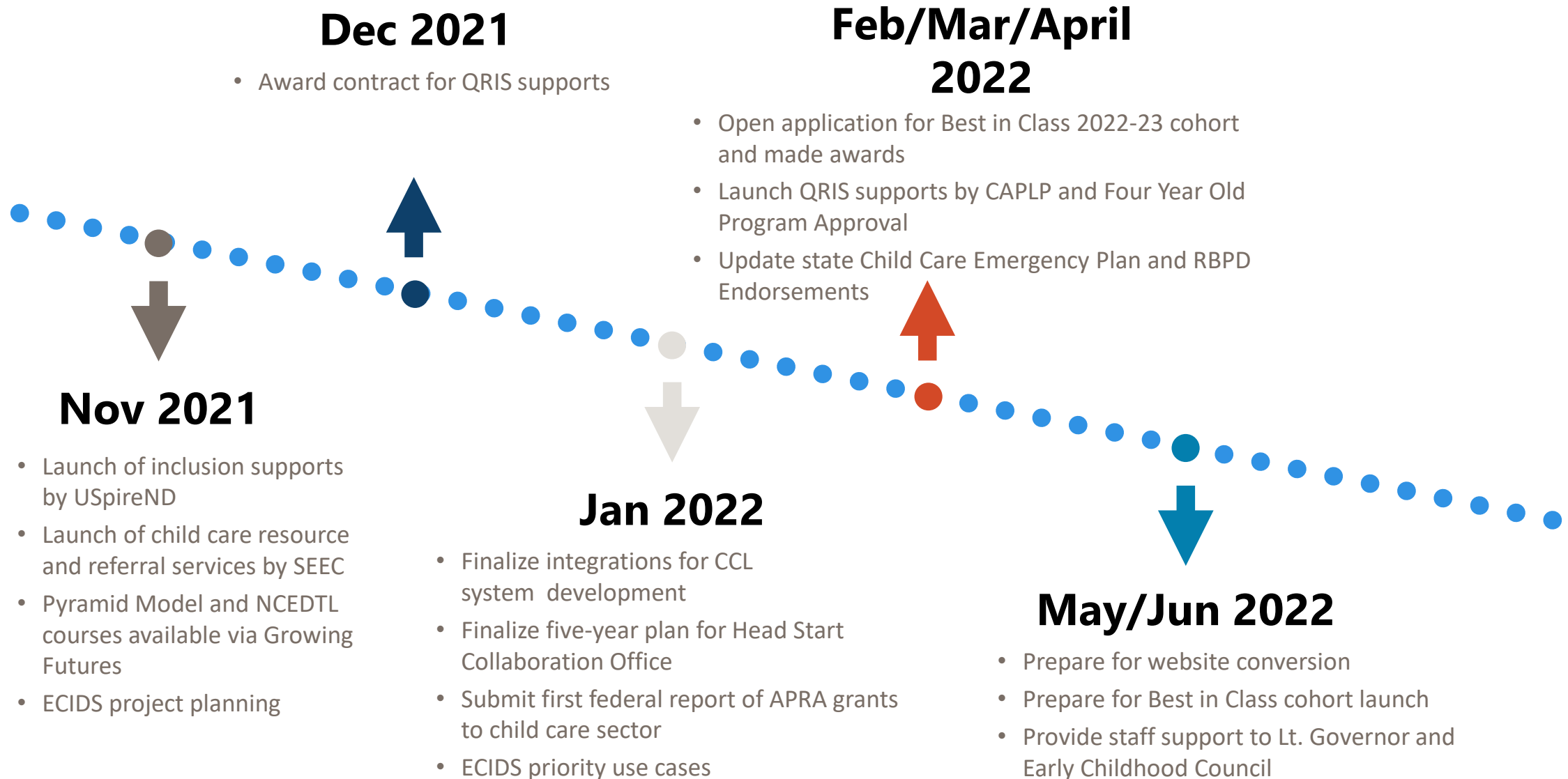
EARLY CHILDHOOD DIVISION TIMELINE

July 2021 to Oct 2021



EARLY CHILDHOOD DIVISION TIMELINE

Nov 2021-June 2022



EARLY CHILDHOOD DIVISION TIMELINE

July – Dec 2022

August 2022

- Prepare content for website conversion
- Launch Best in Class 2022-2023 cohort

October/November 2022

- CCL training for Licensing Specialists
- Promote new self service portal for child care assistance
- Author a PDG B-5 Renewal Grant application

July 2022

- 2022/23 Best in Class cohort begins
- Research partner assists Best in Class programs to market and recruit their community
- Open grant applications for workforce retention, training and career path incentives
- ECIDS Charter and Executive Steering Committee launch

September 2022

- Launch September QRIS Bright & Early ND Cohort
- Provide staff support to Lt. Governor and Early Childhood Council
- Convene Early Childhood Special Education Directors for training and networking around IDEA

December 2022

- Launch CCL
- CCL training for child care providers



Best in Class Program

Quality early childhood experiences for children in the year before they enter kindergarten

Eligible Programs:

HHS approved **four-year-old programs operated by educational facilities, public or private**. These entities must be compliant with ND Department of Public Instruction's desk audits and federal Title program monitoring

Federally funded **Head Start programs**. Head Start grantees must be compliant with Federal Head Start Monitoring Protocol

Licensed child care settings (center or group), inclusive of those operated in connection with a church, business, or organization. These entities must be participating in our state's Quality Rating and Improvement System (QRIS) with a current rating of Step 3 or higher

Program Requirements:

- Maintain 1:10 adult to child ratio; max group size 20
- Conduct a randomized selection process for enrollment, prioritizing 50% of slots
 - Children whose household income is 60% SMI or less
 - Children with an identified delay or disability
- Use sliding fee scale if charging tuition
- Operate minimum of 400 hours over 32 consecutive weeks, serving children that are 4 years old before August 1st of the program year. Programs operating 800 hours over 32 consecutive weeks are encouraged
- Implement a research-based curriculum appropriate for the age of children served
- Utilize Teaching Strategies GOLD for observations and assessment of progress
- Incorporate at least 10 hours of family engagement
- Conduct health screenings with 90 days of start day

Best in Class

Program Resources

Program Resources:

- Grants to support provision of quality early childhood experiences
 - Staffing (salaries, benefits, professional development)
 - Classroom furnishings and instructional materials and supplies
 - Supporting families to participate in referral activities that result from screening
 - Family engagement activities
 - Advertising and outreach
- Teaching Strategies Eco System which includes curriculum, assessment, and family engagement resources
- Coaching to support teachers in
 - implementation of developmentally appropriate environments
 - best practices for health and safety
 - play based whole child curriculum
 - adult/child interactions
 - authentic observation-based assessment
 - using data to drive individualized experiences to support children in reaching widely held expectations

For more information: <https://www.hhs.nd.gov/cfs/early-childhood-services/best-in-class>



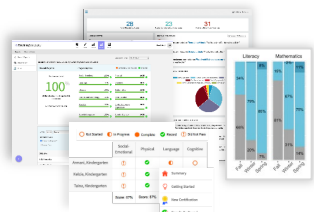
The Creative Curriculum®

The Creative Curriculum® Cloud

Professional Development



GOLD®



Best In Class Implementation

- The Creative Curriculum® for Preschool - Guided Edition delivered to programs
- Programs gain access to The Creative Curriculum® Cloud & ReadyRosie®
- PD Session 1: Getting Started with Teaching Strategies® for Preschool
- Programs set up classrooms in *MyTeachingStrategies®* platform and ReadyRosie®
- PD Session 2: Focus on Assessment
- Programs complete TS GOLD inter-rater reliability and fall, winter, and spring checkpoint
- PD Session 3: Responsive Planning – Meeting the Needs of Children & Families
- PD Session 4: Meaningful Experiences – Using In-Depth Investigations to Support Development & Learning
- PD Session 5: Fidelity - Using Data to Inform Self-Reflection and Guide Professional Growth

Best in Class Roll Out

Pilot Year 1 2021-2022



24 communities; 28 classrooms; 371 children

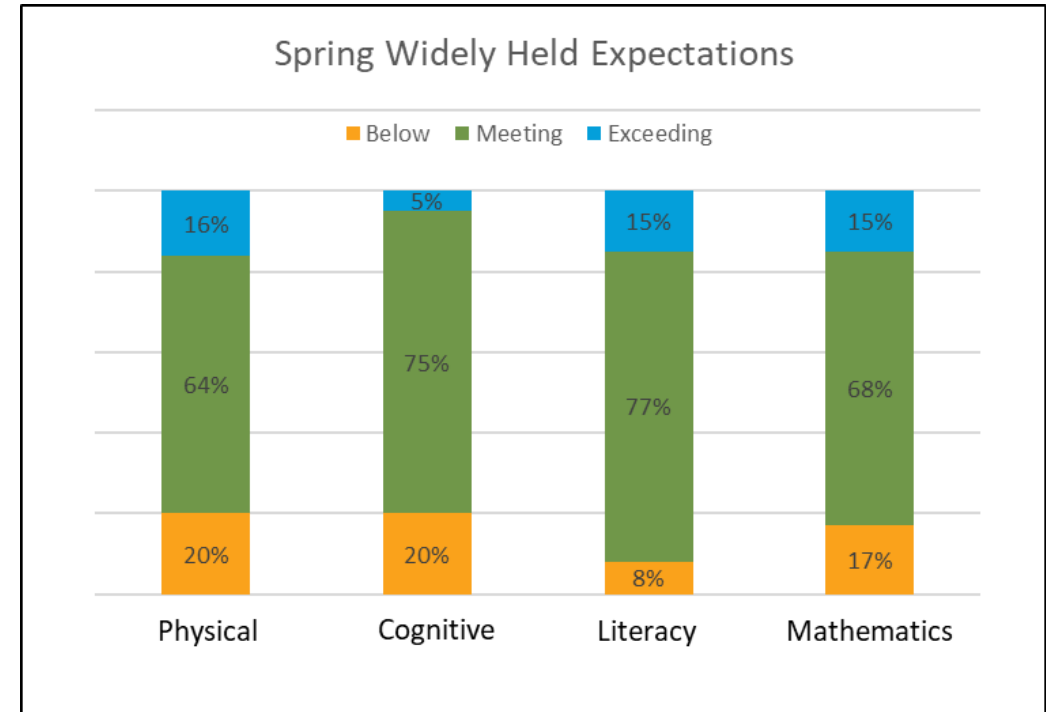
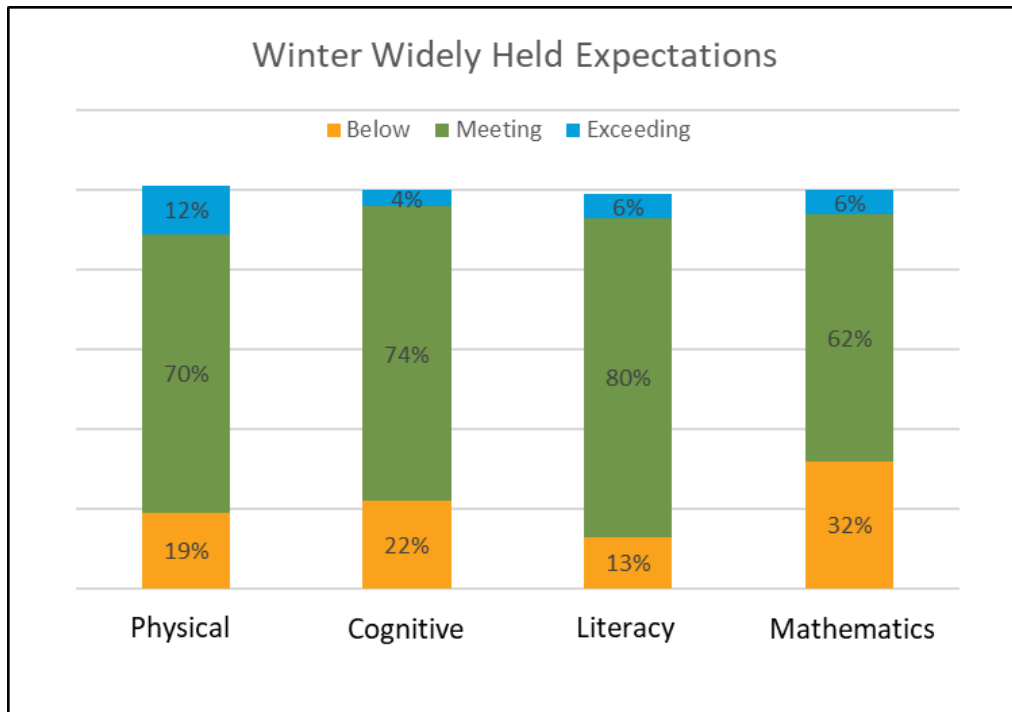
Pilot Year 2 2022-2023



33 communities; 44 classrooms; 544 children

Best in Class

Beginning Trend Line Data



Programs in the first pilot year completed two checkpoints. Scale scores correlate moderately strongly with age and since the tool being used is meant to measure progress across skills that follow a developmental progression, these results are positive and promising.