



*A Health in All Policies Approach
to Large Scale Redevelopment:
Fort McPherson BRAC
(Base Realignment and Closure)*

Levels of Reform

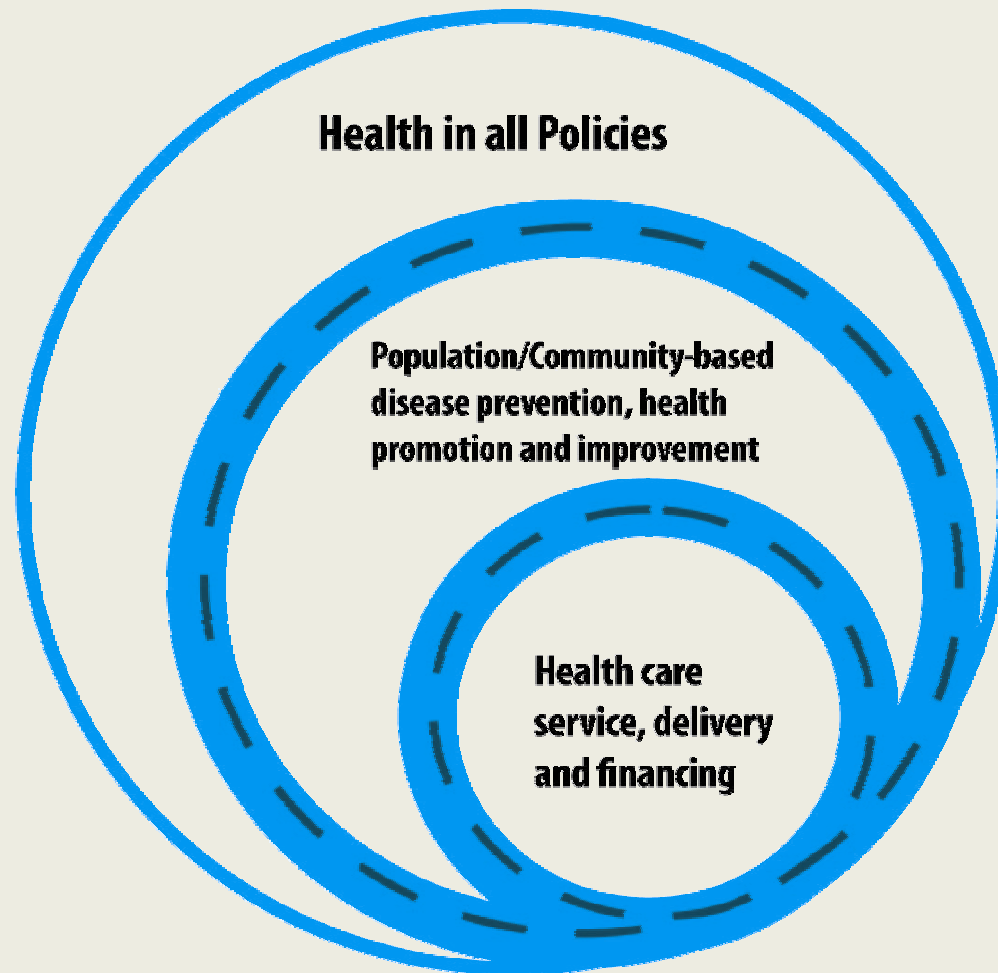


Figure 3 Health Transformation Discussions – January Through May 2008



What is Health in All Policies?

- A strategy that strengthens the link between health and other policies, creating a supportive environment that enables people to lead healthy lives

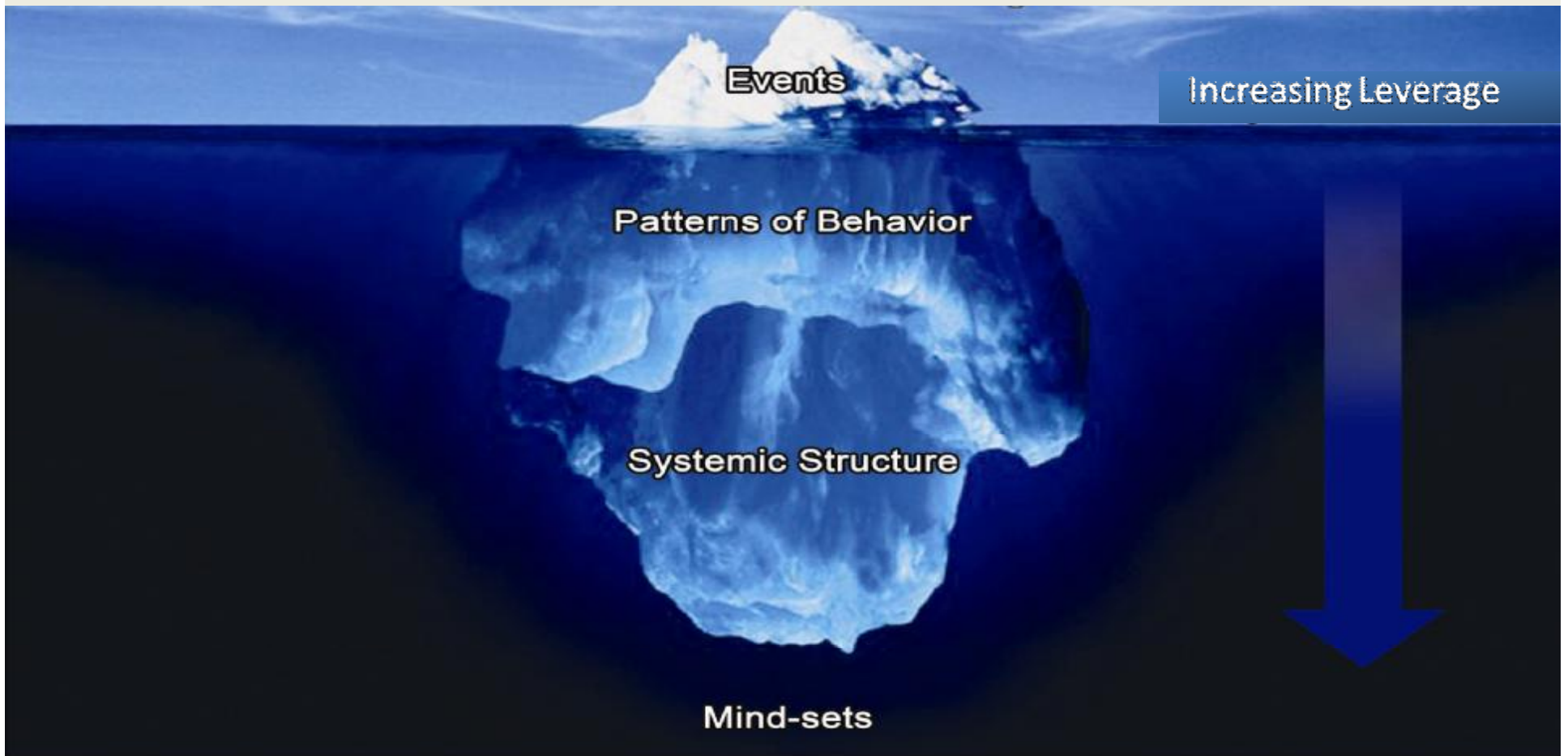


The “Health in All Policies” Approach

- Where we live, how we work, and how we spend our leisure time influence our health and well-being
- Health in All Policies addresses policies in all sectors, including:
 - housing
 - transportation
 - education
 - employment
 - land use
 - environment
 - agriculture

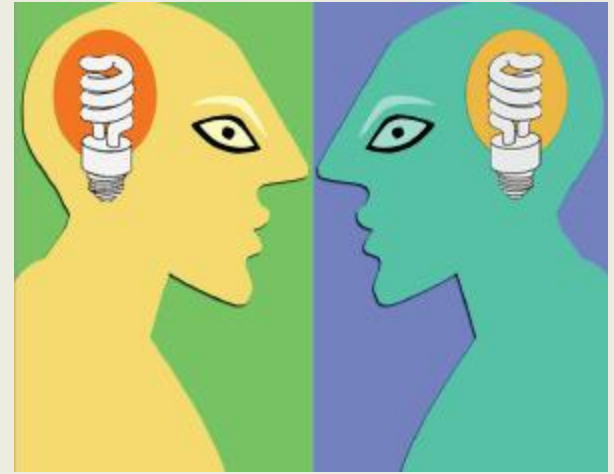


The Iceberg: A Metaphor for the Level at Which We Interact With a System



Source: Sustainability Institute, adapted from other versions from the organizational learning field

Innovations in Public Health Policy



- In 2009, the Centers for Disease Control and Prevention sponsored a competition for Innovations in Public Health Policy
- Purpose:
 - foster greater awareness of policy as an intervention to support public health goals
 - inspire cross-agency collaboration
 - promote partnership with the National Network of Public Health Institutes

Policy Innovation Award

A Health in All Policies Approach to Large Scale Redevelopment: Fort McPherson BRAC

- Phase 1 – Case study
 - Background research, community engagement, participant observation, Health Impact Assessment
- Phase 2 – Strategies for promoting Health in All Policies at the federal level
 - Key informant interviews and federal stakeholder expert meeting