

The image shows the exterior of a brick school building. The building features a prominent green awning over the entrance area. There are several large windows and a set of double doors with a blue accessibility sign. The building is surrounded by a well-maintained lawn and some trees. The sky is clear and blue.

MORROW COUNTY CARE TEAM
&
SCHOOL BASED WELLNESS HUBs

Diane Kilkenny RN BSN
Morrow County Health Department
Morrow County Health Department RN Care Manager

School Wellness HUBs & Community Partners

Morrow County
Government

Local
Community
Advisory
Council

Morrow County
Health Dept.

GOBHI

Morrow
County Schools

Eastern Oregon
Coordinated
Care
Organization

Intermountain
Educational
District

Morrow County
Health District

Department
Of Human
Services



Community
Counseling
Services

Columbia River
Health

Advantage
Dental

Blue
Mountain
Early Learning
HUB

BMCC/
EOU

Community
Members &
Partners

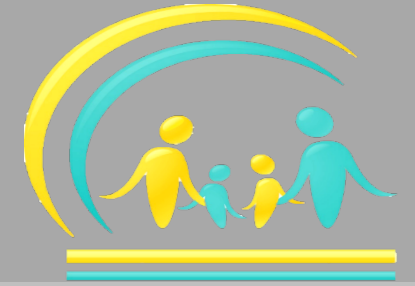
Umatilla/
Morrow
Headstart

Early
Childhood
Committee

Port of
Morrow

Morrow
County Law
Enforcement
Agencies

Morrow County Schools



• DISTRICT PROFILE	ENROLLMENT AND DEMOGRAPHICS 2016-2017			
	Grades K-3	Grades 4-5	Grades 6-8	Grades 9- 12
• Total Enrollment	716	348	473	682
• Regular Attenders	79.4%	84.6%	86.2%	80.1%
• Economically Disadvantaged	74%	79%	72%	67%
• Students with Disabilities	16%	15%	13%	12%
• English Learners	45%	53%	44%	40%
• Different Languages Spoken	8	3	3	4
▪ Mobile Students	16.4%	14.0%	13.2%	18.1%
▪ Hispanic/Latin	59%	61%	53%	53%
▪ White Non Hispanic	38%	38%	45%	44%

Morrow County School District has made it a priority to work with Community stakeholder agencies to provide coordinated care (wrap around services) for students and families: 2018/2019

School District Costs		Braided Additions								Combined
Service	MSCD General Fund	UMCHS	GOBHI. EOCCO,& Grants	Port/Ed Foundation	Ione	Boardman City	Morrow County Gov	IMESD/ MAC	CCS	Total
Workforce Coordinator										
SRO - City Boardman										
SRO - County Irrigon										
SRO - County South End										
Care Coordinators										
CARE RN										
Community Counseling										
Early Childhood										
K-6 Day Behavior Room										
Advantage Dental										
TOTALS	31%	2%	13%	13%	2%	3%	14%	11%	11%	100%

Morrow County CARE Team



Incentive Measure	Results
Adolescent Well Care	2017 EOCCO Target 37.3% 2017 Morrow Co. 46.2% (EOCCO County Summary 3/31/18)
Childhood Immunization 0-2yr.	2017 EOCCO Target 72.9% 2017 Morrow Co. 68.8% (3 needed to meet target)(EOCCO, 3/31/18)
Dental Sealant on Permanent Molars	2017 EOCCO Target 20.0% 2017 Morrow Co. 24.4% (EOCCO, 3/31/18)
School Immunization Exclusions K-12th grade	2016 : 120 School Exclusions Letters (457) 2017 : 12 School Exclusions Letters (421 school immunizations)
Effective Contraceptive Use	2017 EOCCO Target 48.1% 2017 Morrow Co. 49.6% (EOCCO, 3/31/17)