

---

# Public Health & Health System Contributions to School Success

Lillian Shirley, BSN, MPH, MPA  
Public Health Director



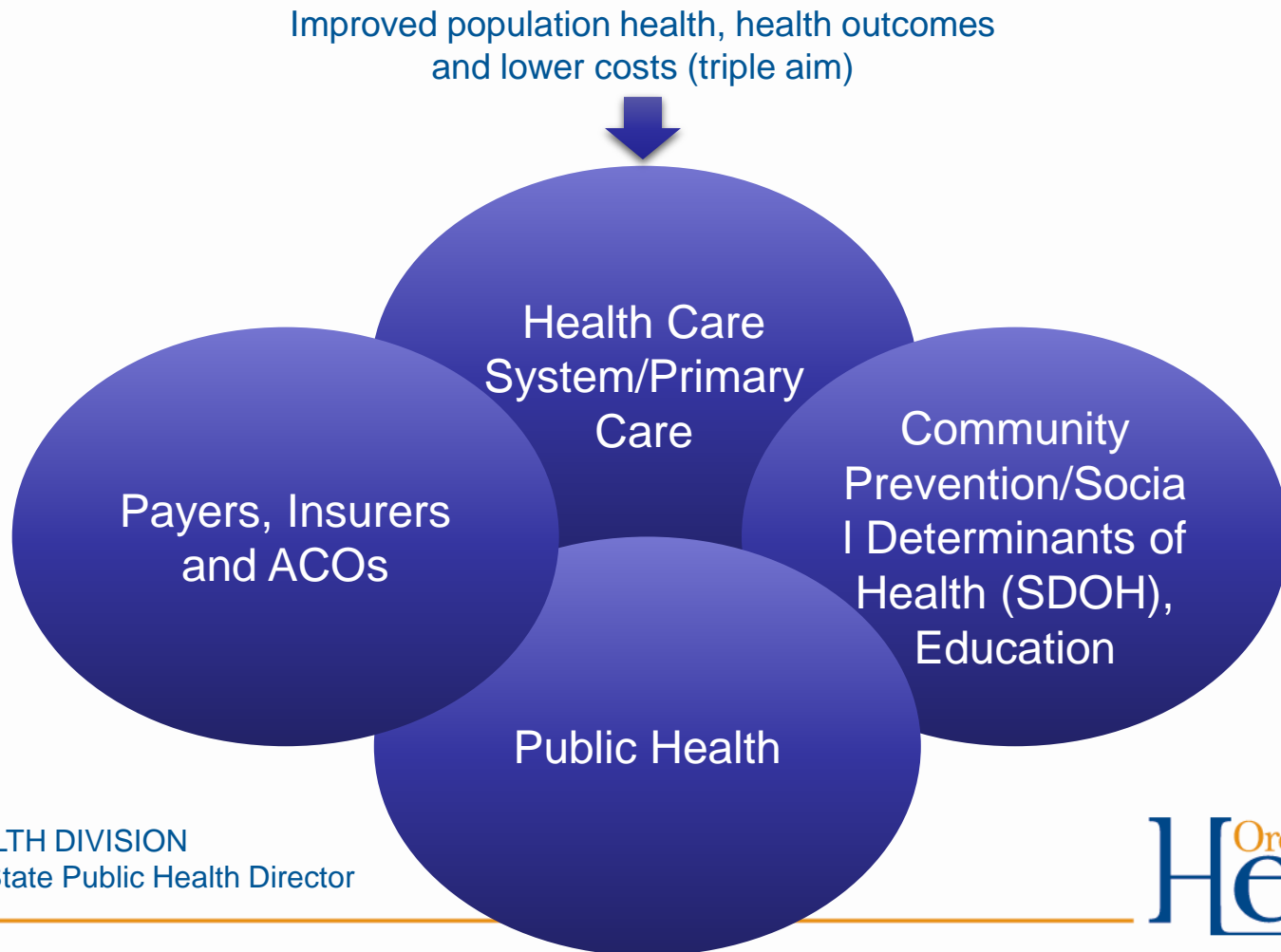
PUBLIC HEALTH DIVISION  
Office of the State Public Health Director

---

# State of Oregon

- 1 Better health
- 2 Better care
- 3 Lower costs

We believe improving population health outcome depends on transforming the health system to coordinate and integrate primary care, public health and community preventative efforts.



# Oregon's transformation:

## Moving toward community-based accountability



|                                    | 2010   | 2012   | 2017   |
|------------------------------------|--|--|--|
| <b>PAYMENT MODELS</b>              |  |  |  |
| Fee for service                    | Episode-based reimbursement  | Partial/full risk capitation                                   | Global budgeting   |
| <b>INCENTIVES</b>                  |  |  |  |
| Conduct Procedures                 | Evidence-based medicine<br>Clinical PFP  | Expanded care management<br>Risk-adjusted PFP                  | Reduce obstacles to behavior change<br>Address root causes |
| <b>METRICS</b>                     |  |  |  |
| Net revenue improvement            | Improved clinical outcomes<br>Reduced readmits                                     | Reduced/preventable hospitalizations/ED<br>Reduced disparities | Aggregate in health status & QOL<br>Reduced HC costs       |
| <b>GOVERNANCE</b>                  |  |  |  |
| Informal relationships & referrals | Joint partnerships between organizations<br>e.g. mental health & behavioral health |  | New community-based accountability linking all             |

Information from Public Health Institute

# Key P-5 start to kindergarten readiness

