

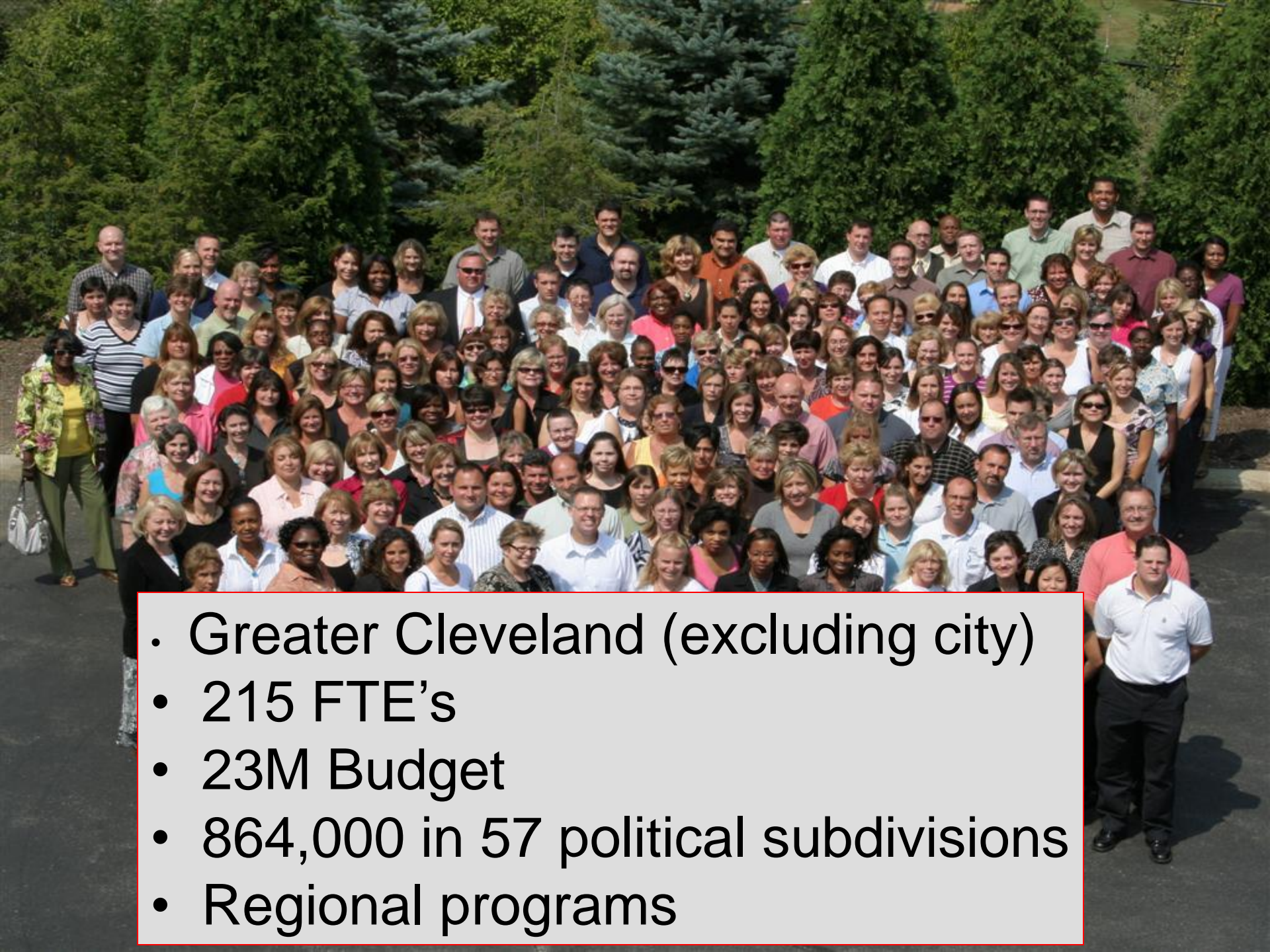
Cuyahoga County Board of Health (CCBH)

Funding Opportunities for Local Health Departments in Ohio

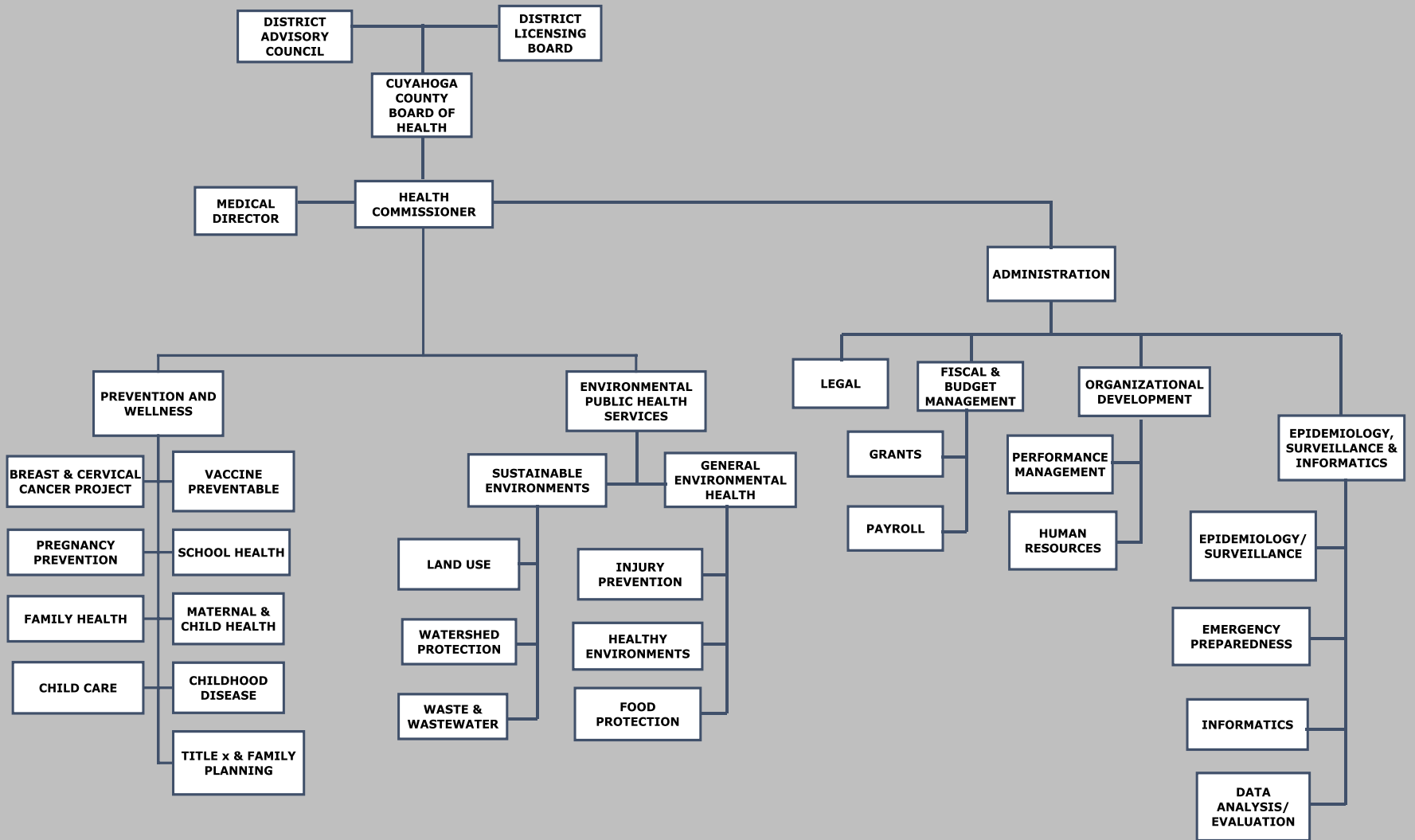
Objectives

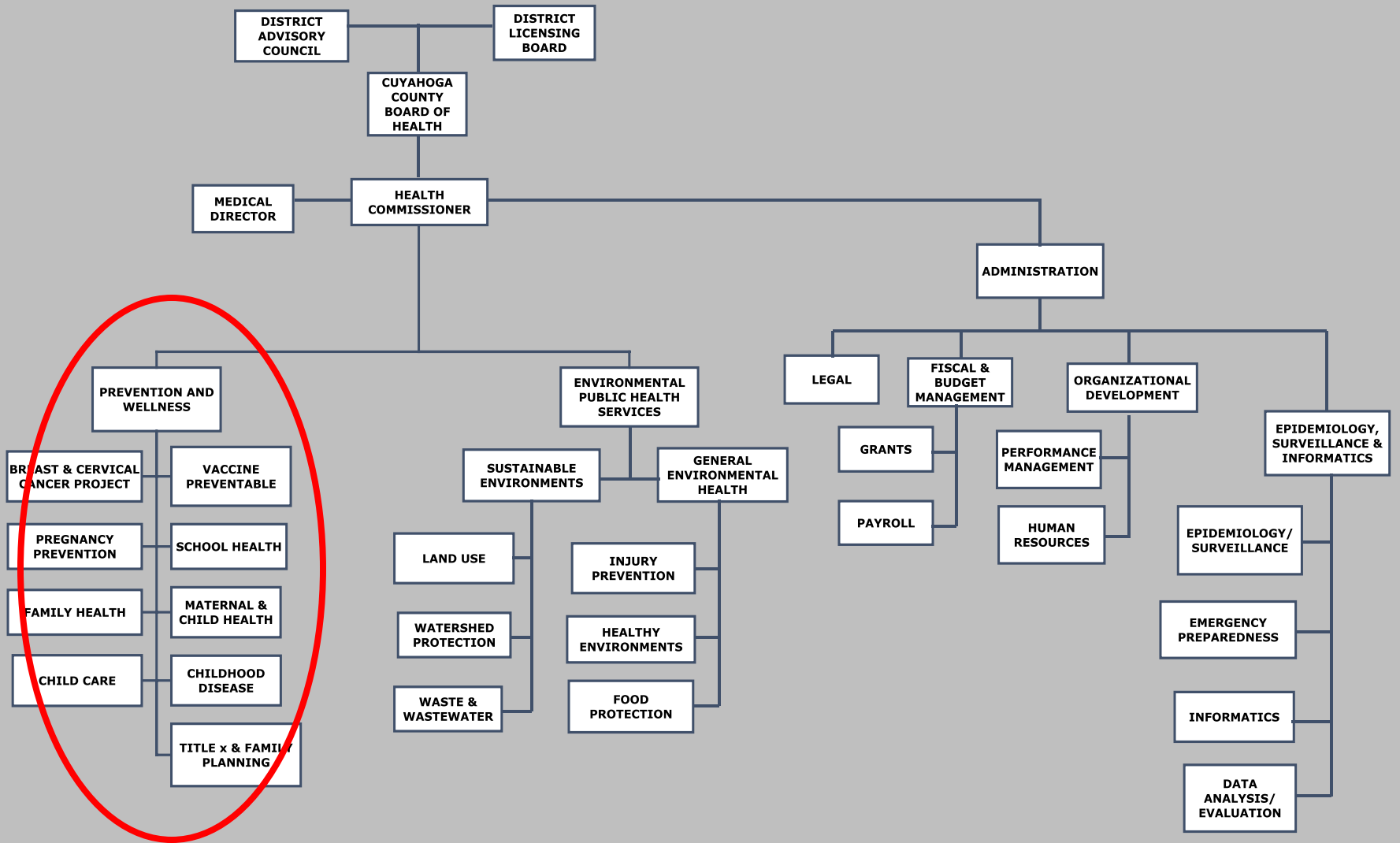
- Overview of my agency
- Big Picture in Ohio
- Emerging Opportunities
- Novel Approaches

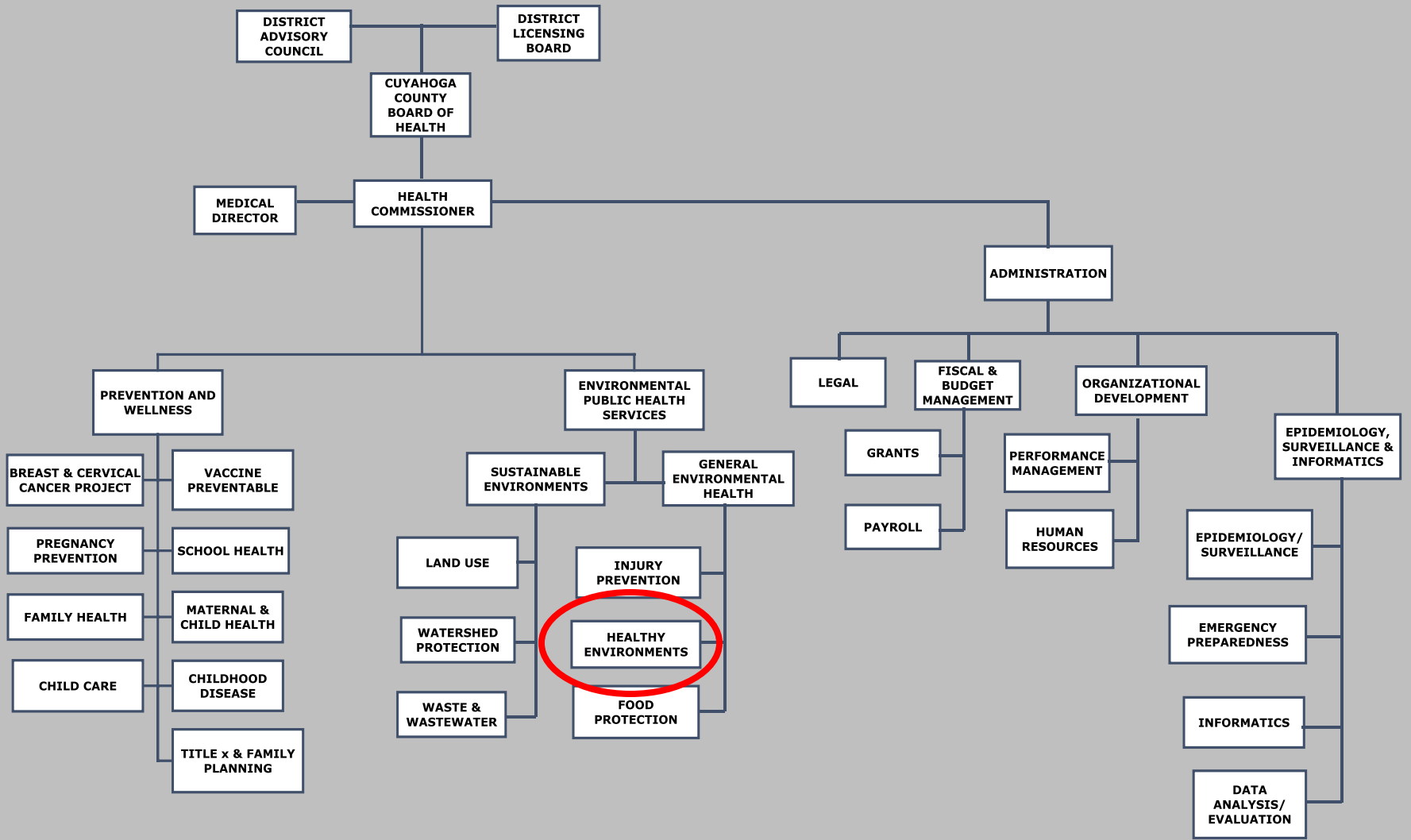


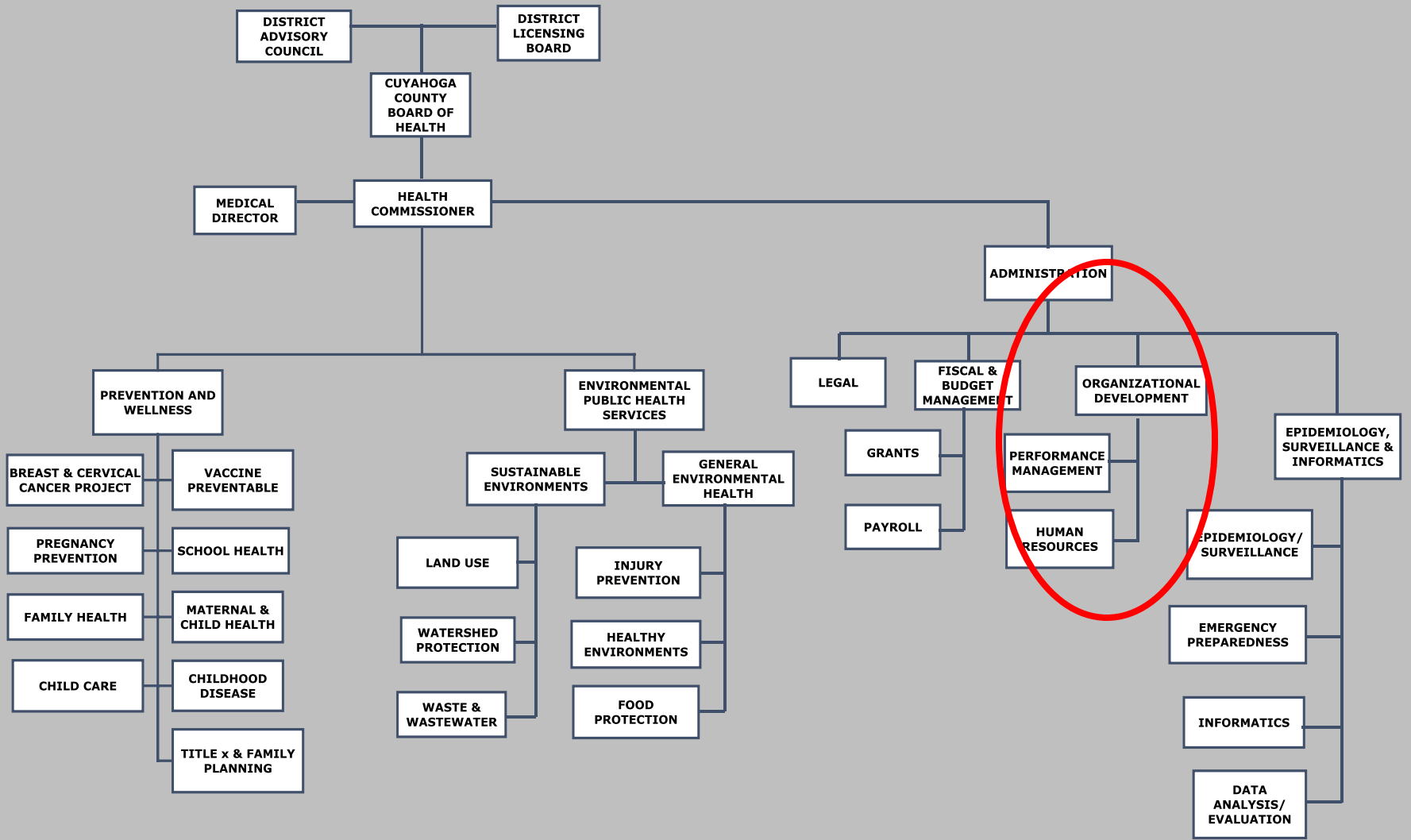


- Greater Cleveland (excluding city)
- 215 FTE's
- 23M Budget
- 864,000 in 57 political subdivisions
- Regional programs





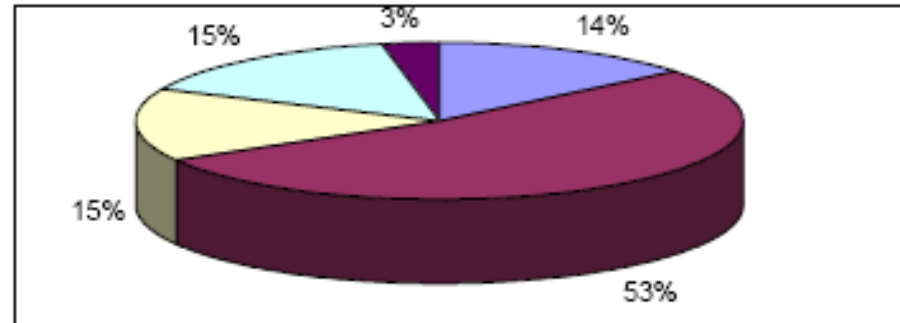




2010 Financial Overview

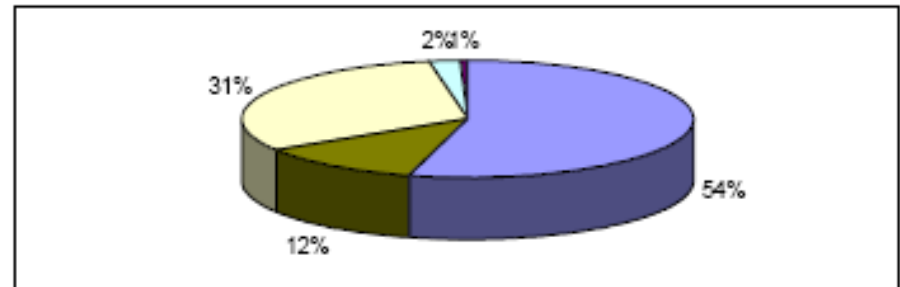
REVENUE

	<u>In Dollars</u>	<u>Pct</u>
City Contracts	\$3,278,828	14%
Federal, State & Local Funds	12,079,896	53%
Licenses, Permits & Fees	3,417,715	15%
Charges for Services	3,521,109	15%
Other Receipts	703,160	3%
Total Revenue	\$23,000,708	100%



EXPENDITURES

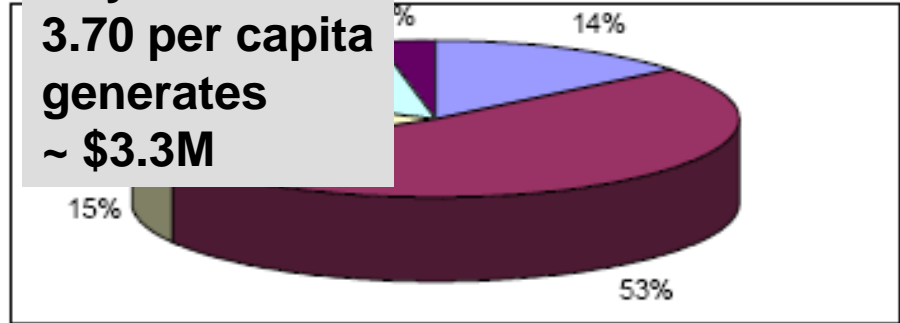
	<u>In Dollars</u>	<u>Pct</u>
Personal Services	12,544,887	54%
Services & Charges	2,808,307	12%
Grants & Subcontracts for Services	7,220,256	31%
Supplies & Materials	457,442	2%
Capital Outlays	160,217	1%
Total Expenditures	23,191,109	100%



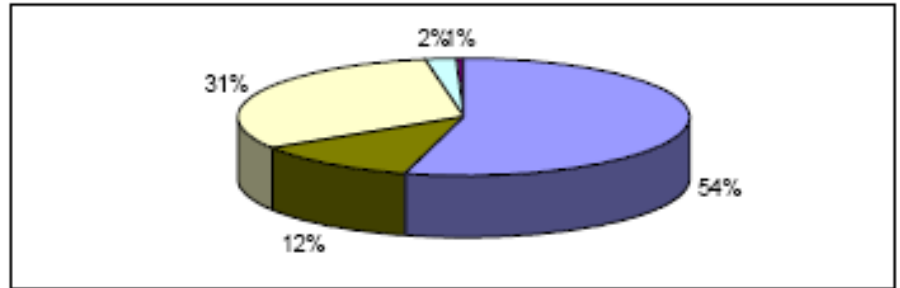
2010 Financial Overview

<u>REVENUE</u>	<u>In Dollars</u>	<u>Pct</u>
City Contracts	\$3,278,828	14%
Federal, State & Local Funds	12,079,896	53%
Licenses, Permits & Fees	3,417,715	15%
Charges for Services	3,521,109	15%
Other Receipts	703,160	3%
Total Revenue	\$23,000,708	100%

**City Contracts
3.70 per capita
generates
~ \$3.3M**



<u>EXPENDITURES</u>	<u>In Dollars</u>	<u>Pct</u>
Personal Services	12,544,887	54%
Services & Charges	2,808,307	12%
Grants & Subcontracts for Services	7,220,256	31%
Supplies & Materials	457,442	2%
Capital Outlays	160,217	1%
Total Expenditures	23,191,109	100%

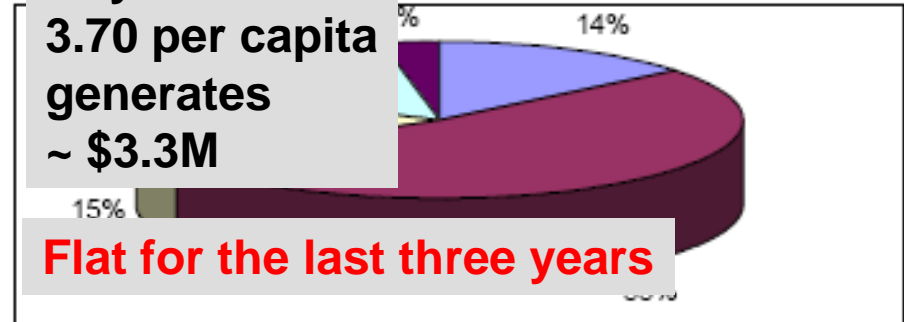


2010 Financial Overview

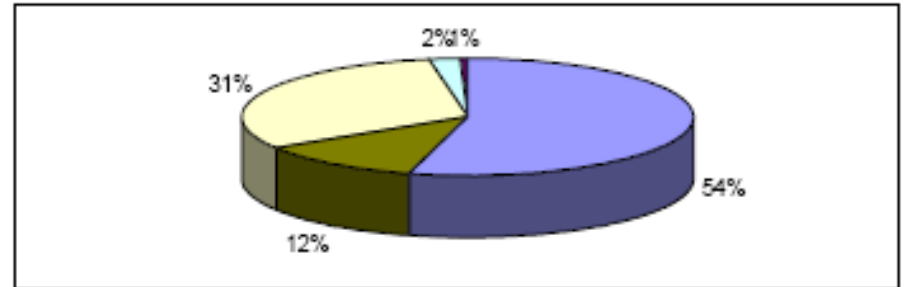
<u>REVENUE</u>	<u>In Dollars</u>	<u>Pct</u>
City Contracts	\$3,278,828	14%
Federal, State & Local Funds	12,079,896	53%
Licenses, Permits & Fees	3,417,715	15%
Charges for Services	3,521,109	15%
Other Receipts	703,160	3%
Total Revenue	\$23,000,708	100%

**City Contracts
3.70 per capita
generates
~ \$3.3M**

Flat for the last three years

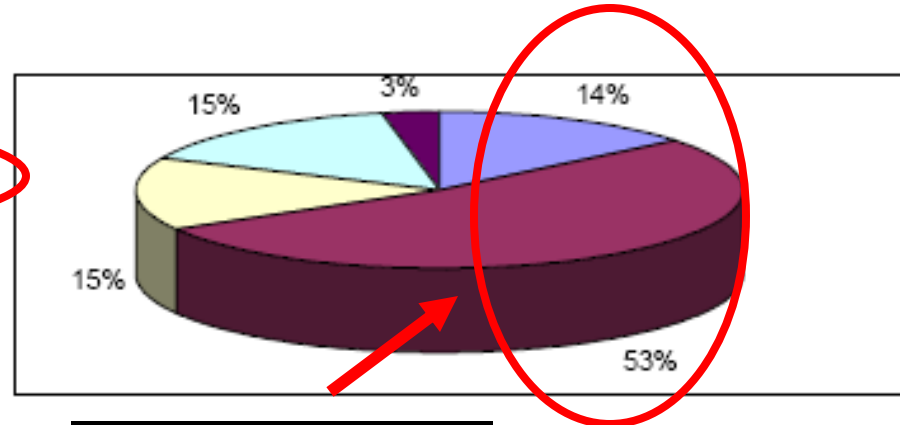


<u>EXPENDITURES</u>	<u>In Dollars</u>	<u>Pct</u>
Personal Services	12,544,887	54%
Services & Charges	2,808,307	12%
Grants & Subcontracts for Services	7,220,256	31%
Supplies & Materials	457,442	2%
Capital Outlays	160,217	1%
Total Expenditures	23,191,109	100%



2010 Financial Overview

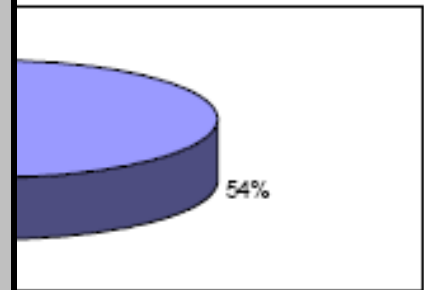
<u>REVENUE</u>	<u>In Dollars</u>	<u>Pct</u>
City Contracts	\$3,278,828	14%
Federal, State & Local Funds	12,079,896	53%
Licenses, Permits & Fees	3,417,715	15%
Charges for Services	3,521,109	15%
Other Receipts	703,160	3%
Total Revenue	\$23,000,708	100%



<u>EXPENDITURES</u>	<u>In Dollars</u>	<u>Pct</u>
Personal Services	12,544,887	54%
Services & Charges	2,808,307	12%
Grants & Subcontracts for Services	7,220,256	31%
Supplies & Materials	457,442	2%
Capital Outlays	160,217	1%
Total Expenditures	23,191,109	100%

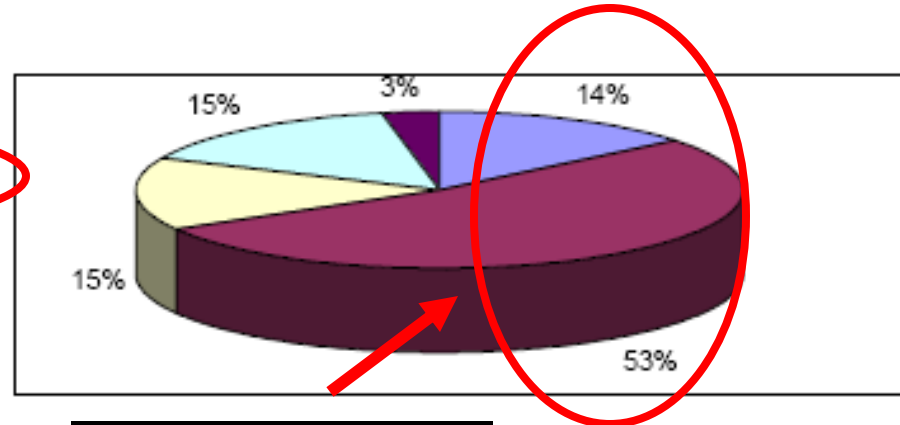
Of this total:

- **48% Federal**
- **43% Local**
- **9% State**



2010 Financial Overview

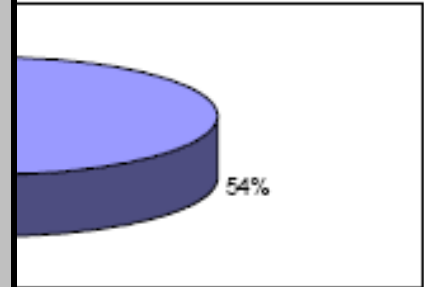
<u>REVENUE</u>	<u>In Dollars</u>	<u>Pct</u>
City Contracts	\$3,278,828	14%
Federal, State & Local Funds	12,079,896	53%
Licenses, Permits & Fees	3,417,715	15%
Charges for Services	3,521,109	15%
Other Receipts	703,160	3%
Total Revenue	\$23,000,708	100%



<u>EXPENDITURES</u>	<u>In Dollars</u>	<u>Pct</u>
Personal Services	12,544,887	54%
Services & Charges	2,808,307	12%
Grants & Subcontracts for Services	7,220,256	31%
Supplies & Materials	457,442	2%
Capital Outlays	160,217	1%
Total Expenditures	23,191,109	100%

Of this total:

- **48% Federal**
- **43% Local**
- **9% State**





Copyright 2005 digital-topo-maps.com

Ohio

- 11 million pop
- 88 counties
- 130 LHD's
- All shapes and sizes

Toledo

Cleveland

Akron

Columbus

Dayton

Rural Appalachia

Cincinnati



Ohio's LHD's |

- 58 urban health departments
- 71 rural health departments
- 22 city charters
- 61 combined health districts
- 24 counties with more than one health department
- Employ 5,574 individuals (2009)
 - 4% loss from 2008

Ohio's LHD's II

- Discussions on Regional Collaborations only beginning
- Mostly due to fiscal challenges
- Accreditation catalyzing discussions
- Legislature creating a fund to encourage local collaborations
 - Cuyahoga County has 59 separate political subdivisions
 - 155 LHD's in OH the 1980's, 130 now

LHD Funding in Ohio

- 75% Local Funding Sources (levies, inside millage and user/permit fees)
- 20% State Sources (competitive grants, pass through federal monies and per capita subsidy from the Ohio Department of Health to qualified health departments)
- 4.3% Federal Sources / Private Sources (targeted federal grant monies, etc.)

Federal Funding for Public Health

Top 5 States

- Alaska
- Vermont
- Wyoming
- Rhode Island
- New Mexico

Bottom 5 States

- 46. Kentucky
- 47. Pennsylvania
- 48. Indiana
- 49. Ohio (7th in population)
- 50. Virginia

Source: Trust For America's Health

Federal Funding for LHD's

- Emergency Preparedness
 - Built epidemiologic capacity across Ohio
 - Goal: 1 Epi/200,000 population
 - Regional collaboration
- State match dollars essential (PHHS, MCH)

“Hard” Money for OH LHD’s

- Cost Methodology to establish license fees in EH programs for LHD’s
- Some levies, some contractual relationships
- County government (variable)
- Inside Millage
 - Local Property tax rates are always computed in mills. One mill costs the property owner \$1.00 for every \$1,000 of assessed valuation each year. In our example, a \$100,000 home will produce \$35 in tax revenue for each mill.
 - Levied without a vote
- Small state subsidy
 - Historically, 20-25 cents per capita

Ohio LHD's Funding Varies Widely

- Examples:
 - Some LHD's in rural areas provide extensive plumbing, marina and/or manufactured home park programs, which bring substantial revenue
 - Some provide extensive primary care services, but the majority do not
 - A small subset bill Medicaid and private insurance for services

Emerging Opportunities



Case Study: Akron/Summit County Merger

- Study committee
- Political will and commitment
- Projected benefits
 - 15% budget savings, 3-5 years
 - Reduce inefficiencies/redundancies
 - Improved service delivery
- Gene Nixon, Health Commissioner
 - gnixon@schd.org

Leadership Challenges

- Politics
- Home rule
- Neutral Facilitation
- Identified Champion

Medicaid Administrative Claiming (MAC)

Ohio's MAC –
Helping You
to Help Others

Ohio's
Medicaid Administrative
Claiming (MAC)
for
Local Public Health
Departments

Ohio's MAC program for Local
Public Health Departments is
administered by the
Ohio Department of Health.
For information call
614-995-7518
or email

MAC-Administrator@odh.ohio.gov



Ohio Department of Health

This institution is an equal opportunity provider

www.odh.ohio.gov/about/finmgmt/mac.aspx



Ohio's MAC-Helping You to Help Others



PREVENT • PROMOTE • PROVIDE™



Public Health
Prevent. Promote. Protect.

Northeast Ohio Public Health Partnership

MAC

- LHD's became eligible in OH in 2009
- Reimbursement of LHD's
 - administrative activities that directly support efforts to identify and enroll potential eligible clients into Medicaid
 - to bring them into services covered by Medicaid
 - to remove barriers to accessing Medicaid services and to reduce gaps in Medicaid services

MAC Objectives

- Emphasize outreach to bring potential eligible clients into Medicaid
- Links Medicaid eligible clients into Medicaid services that
 - **Improves the use** of Medicaid covered service OR
 - **Improves the access** to Medicaid coverage

MAC Formula

Actual expenditures (salaries, benefits, other costs of individual in time-study)

X Percentage of time claimable to MAC (determined by the time-study)

X Percentage of Medicaid Eligibility Rate (MER) for the county (20-30%)

X 50% federal financial participation =

Amount of Federal Reimbursement

Current MAC Participation

- Ohio Dept of Health and 35 LHD's are participating
- State of Ohio gets 10% Admin fee on all claims
- 35 LHD's currently participating

Revenue

- October – December 2010 Claiming for the Quarter:
 - Ohio Dept of Health: ~ \$ 442,300
 - Combined LHD's: ~ \$ 668,800
 - Total for the Quarter: ~ \$1,111,100**

CCBH Estimated Annual Revenue: 240K

Revenue

- October – December 2010 Claiming for the Quarter:
 - Ohio Dept of Health: ~ \$ 442,300
 - Combined LHD's: ~ \$ 668,800
 - Total for the Quarter: ~ \$1,111,100**

CCBH Estimated Annual Revenue: 240K

Est. Annual City Contract Losses: 200K

Current Legislative Process: Increase in State Subsidy

- Local Stormwater Utility
- Increase in Vital Statistics Fees and sharing of revenue between state and locals
 - Net increase for locals ~ 8 cents per capita
- Model for other fee sharing
 - Solid waste tipping fees, tobacco taxes (ALA)

Contact: Beth Bickford, Executive Director

Association of Ohio Health

Commissioners (aohc_1@aohc.net)

Others

- Travel Clinic
- Phase II Stormwater
- Austin/Travis County, Texas
 - Interlocal Agreements
 - Pay for capacity, rather than services
- Contact: Shannon Jones, Acting Director



Thank You Very Much!

Terry Allan
Cuyahoga County Board of Health
tallan@ccbh.net
(216) 201-2011
www.ccbh.net