



150 YEARS
OF ADVANCING
PUBLIC
HEALTH

Massachusetts Department of Public Health

MOVING HEALTH CARE UPSTREAM IN MASSACHUSETTS

National Academies of Sciences, Engineering and Medicine

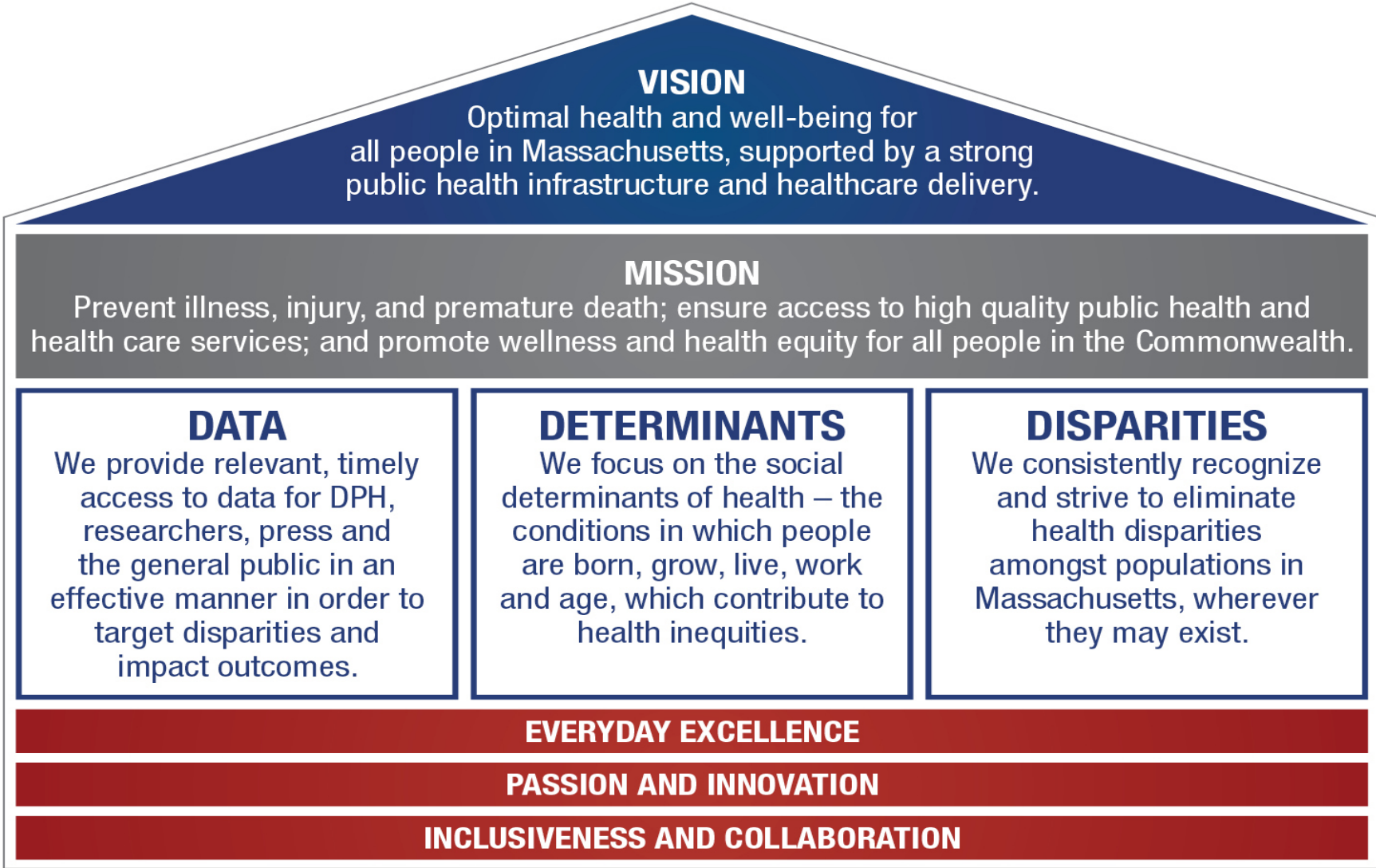
April 26th, 2019

Monica Bharel, MD, MPH

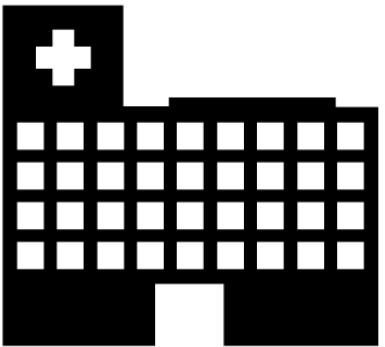
Commissioner, Massachusetts Department of Public Health



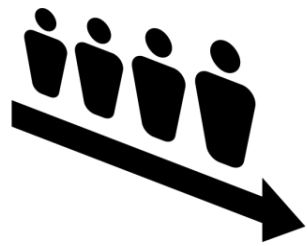
The Massachusetts DPH House



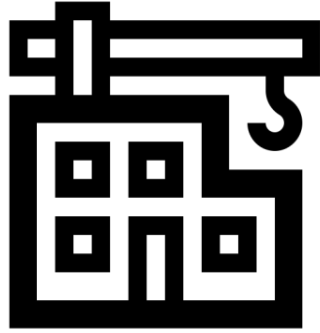
MA Determination of Need, Community Health Initiative



Hospital
Health Care System
Health Care Facility



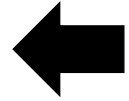
Need to Expand /
Improve Health Care
Facilities



Determination of
Need Project

5%

Community Health
Initiative
Funding



\$\$\$\$

Project's
Maximum Capital
Expenditure

Standards for our Community Health Initiative: Health Priorities



Source: Massachusetts State Health Assessment, 2017

Standards for our Community Health Initiative: Community Engagement



Community health improvement planning (CHIP):

- Continuous process of community engagement
- At different points in the process different types of community engagement may be necessary

DoN CHI planning process:

- Episodic and fitting into overarching CHIP



Example of Early Success

Innovative and new SDoH strategies and collaborations (Boston examples)

- Investing in new Affordable Housing development and healthy retail through a social impact fund
- Empowering the community through an Innovative Housing Stability Fund
- All Boston Hospitals (13) collaborating on one Community Health Needs Assessment and Community Health Improvement Plan
 - MA DPH SDoH framing is a key component.



Bartlett Station (Roxbury) Affordable Housing and Healthy Retail Development