



Grand Challenges Canada™
Grands Défis Canada^{MC}

Investing in Young Children Globally

Dr. Peter A Singer

The Problem:

As many as 200 million children fail to reach their full potential. Children in poverty have a higher chance of adversity that risks disrupting brain development. This is a devastating waste of human capital that leaves the next generation ill equipped to face the enormous challenges that lock individuals, communities and societies in poverty.

The Challenge:

To develop sustainable ways to promote and nurture healthy child and brain development in the first 1000 days at scale with lasting impact on human capital in low-resource settings.



Current Partners:

- **Global** – The Bill & Melinda Gates Foundation
- **Regional** – Maria Cecilia Souto Vidigal Foundation and the Bernard van Leer Foundation, in association with Grand Challenges Brazil, an initiative of the Brazil Ministry of Health

Additional global, regional, corporate and implementation partners to be added in 2014.

- ▶ Grand Challenges Canada is funded by the Government of Canada.
- ▶ Mr. Joseph L. Rotman is Chairman of Grand Challenges Canada.
- ▶ Mrs. Laureen Harper is Honorary Chair of the Saving Brains Grand Challenge.

Saving Brains

Imagine an exit strategy from poverty – a generation of children who become healthy, productive and participating members of society.



Grand Challenges Canada™
Grands Défis Canada™

BOLD IDEAS WITH BIG IMPACT.™

We support **bold ideas** to improve early child development in low- and middle-income countries. The portfolio currently includes innovations addressing three components of healthy development:



Saving Brains projects measure the following common outcome metrics:	Physical growth Cognitive function Language Socioemotional capacity Academic attainment	HAZ, LAZ or WAZ General intelligence, executive function Receptive and expressive language, literacy Behavioural and emotional problems, infant temperament Years of schooling, school access
--	--	---

Total investments to date: \$28M invested in 44 projects and a platform to accelerate progress against the challenge.

- Projects being implemented in **16 low- and middle-income countries** in Africa, Asia and Latin America & Caribbean.
- Platform led by the **TruePoint Center** and the **Harvard Center on the Developing Child**.



grandchallenges.ca

Do you have a BOLD idea? The next round opens in July 2014

Focus areas under consideration by OWG

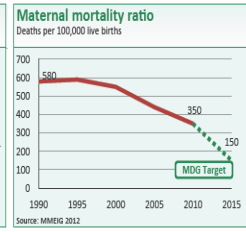
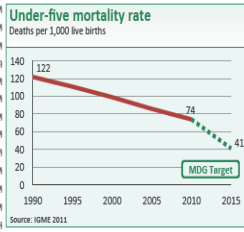


Grand Challenges Canada™
Grands Défis Canada™

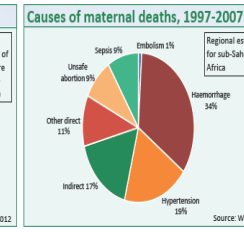
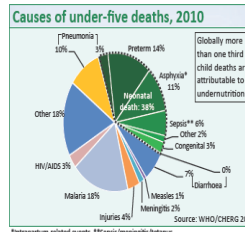
1. Poverty eradication
2. Sustainable agriculture, food security and nutrition
3. Health and population dynamics
4. Education
5. Gender equality and women's empowerment
6. Water and sanitation
7. Energy
8. Economic growth
9. Industrialization
10. Infrastructure
11. Employment and decent work for all
12. Promote equality
13. Sustainable cities and human settlements
14. Promote sustainable consumption and production
15. Climate
16. Conservation and sustainable use of marine resources, oceans and seas
17. Ecosystems and biodiversity
18. Means of implementation/Global partnership for sustainable development
19. Peaceful and non-violent societies, rule of law and capable institutions

DEMOGRAPHICS

Total population (000)	24,392 (2008)
Total under-five population (000)	3,533 (2008)
Births (000)	770 (2008)
Birth registration (%)	71 (2008)
Total under-five deaths (000)	57 (2008)
Neonatal deaths: % of all under-5 deaths	38 (2008)
Neonatal mortality rate (per 1000 live births)	28 (2008)
Infant mortality rate (per 1000 live births)	50 (2008)
Stillbirth rate (per 1000 total births)	22 (2008)
Total maternal deaths	2,700 (2008)
Lifetime risk of maternal death (1 in N)	68 (2008)
Total fertility rate (per woman)	4.2 (2008)
Adolescent birth rate (per 1000 women)	70 (2008)



DEMOGRAPHICS

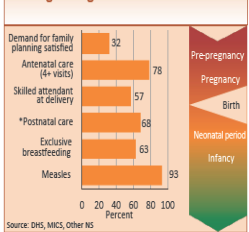


POLICIES

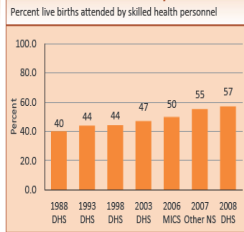
Maternity protection in accordance with Convention 183	Partial
Specific notification of maternal deaths	Yes
Midwifery personnel authorized to administer core set of life saving interventions	Yes
International Code of Marketing of Breastmilk Substitutes	Yes
Postnatal home visits in first week of life	Yes
Community treatment of pneumonia with antibiotics	Yes
Low osmolarity ORS and zinc for management of diarrhoea	Yes
Rotavirus vaccine	Partial
Pneumococcal vaccine	Partial

MATERNAL AND NEWBORN HEALTH

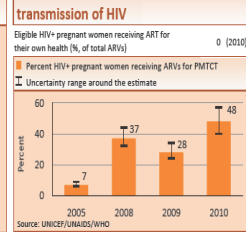
Coverage along the continuum of care



Skilled attendant at delivery

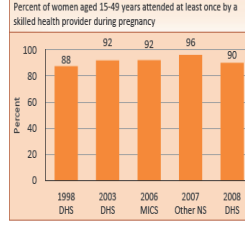


Prevention of mother-to-child transmission of HIV



MATERNAL AND NEWBORN HEALTH

Antenatal care

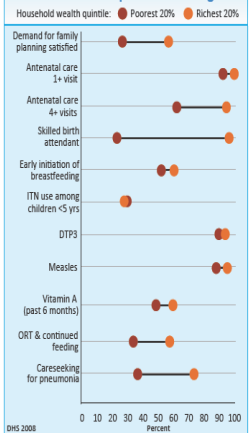


Demand for family planning satisfied (%)

Demand for family planning satisfied (%)	32 (2008)
Antenatal care (4 or more visits, %)	78 (2008)
Malaria during pregnancy - intermittent preventive treatment (%)	44 (2008)
C-section rate (total, urban, rural, %) (Minimum target is 5% and maximum target is 15%)	7, 11, 5 (2008)
Neonatal tetanus vaccine (%)	86 (2008)
Postnatal visit for baby (within 2 days for all births, %)	-
Postnatal visit for mother (within 2 days for all births, %)	68 (2008)
Women with low body mass index (<18.5 kg/m², %)	8 (2008)

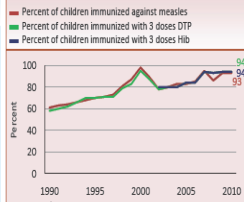
EQUITY

Socioeconomic inequities in coverage

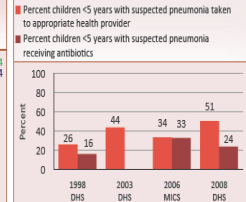


CHILD HEALTH

Immunization

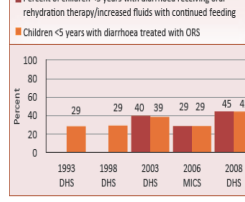


Pneumonia treatment

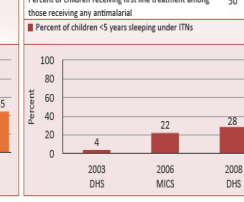


CHILD HEALTH

Diarrhoeal disease treatment

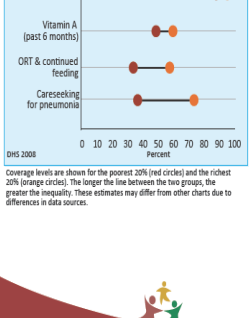


Malaria prevention and treatment

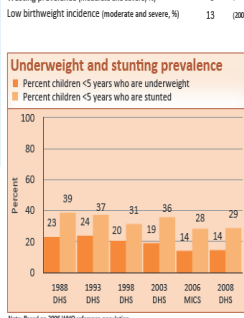


NUTRITION

Underweight and stunting prevalence

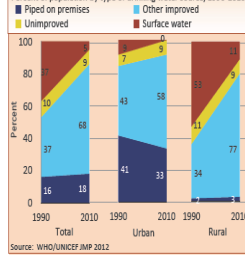


Exclusive breastfeeding

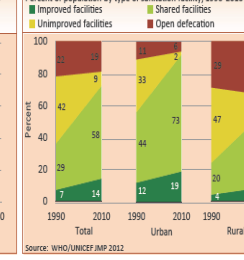


WATER AND SANITATION

Improved drinking water coverage



Improved sanitation coverage



SYSTEMS AND FINANCING

Costed national implementation plan(s) for maternal, newborn and child health available	Yes
Density of doctors, nurses and midwives (per 10,000 population)	11.4 (2008)
National availability of emergency obstetric care services (% of recommended minimum)	37 (2011)
Per capita total expenditure on health (US\$)	325 (2008)
General government expenditure on health as % of total government expenditure (%)	12 (2008)
Out-of-pocket expenditure as % of total expenditure on health (%)	27 (2008)
Official development assistance to child health per child (US\$)	21 (2008)
Official development assistance to maternal and neonatal health per live birth (US\$)	43 (2008)

Age appropriate development
 Child disability
 Child stimulation and learning
 Child stimulation and learning
 Caregiving practices
 Violence against children
 Maternal mental health
 ECD promoting policies